



## MEMORANDUM

TO: Brad Stimple REF. NO.: 13968

FROM: Jim McGuigan/jdh/697/rev1 DATE: March 25, 2011

C.C.: Peter Ramanauskas, Jerry O'Callaghan, Dave Favero,  
Cheryl Hiatt, Ed Peterson, Katie Kamm, Paul Gallaway

RE: **Downstream Parcels Removal Action Work Plan: Addendum No. 3 - Revision 1**  
**GM CETC Bedford Facility**  
**Bedford, Indiana**

### 1.0 INTRODUCTION

In accordance with the Administrative Order on Consent (AOC), effective July 31, 2003, and pursuant to Section 3.7: Soil Excavation, Handling and Backfilling in the Downstream Parcels Removal Action Work Plan (CRA, May 2004), and the Parcel 22/Downstream Parcels Removal Action: Addendum No 1 (CRA, May 2005), we are providing the following supplemental information and proposing revised procedures regarding the removal action for the remaining PCB impacted soil excavation beneath the former Staging Area G footprint. The former Staging Area G refers to the remnant of the engineered stockpile utilized to temporarily consolidate and manage contaminated soil generated from the Removal Action west of Peerless Road. The engineered stockpile was constructed in an area of the Removal Action prior to the remediation of the underlying native soils. The last of the contaminated soils within the engineered stockpile were removed and transported to the GM CETC Bedford Facility in 2010. The remnants of former Staging Area G consists of approximately 2 feet of a clean clay pad and geotextile material overlaying these impacted native soils.

Figure 1.1 presents the original, preliminary limit of the remaining excavation based on the initial delineation phase (2002), which was conducted prior to submittal of the Downstream Parcels Removal Action Work Plan. The purpose of this amendment to the Removal Action Work Plan (Downstream Parcels Removal Action Work Plan: Addendum No. 3) is to propose revised excavation limits on a prescriptive removal basis based on substantial additional delineation sampling completed from October 2010 through March 2011.

### 2.0 ADDITIONAL GRID SAMPLING INVESTIGATION RESULTS SUMMARY

The area under and around the former Staging Area G was gridded off and a total of 115 boreholes were advanced within the gridded area in accordance with the approved Additional Proposed Delineation Sampling Plan, Second Revision (CRA, October 22, 2010). Samples were collected in 0.5 feet (ft) intervals within the native soil, to a maximum depth of 4.5 ft. Samples were analyzed with increasing depth in an iterative fashion until a result was obtained that was no greater than 1.8 milligrams per kilogram (mg/kg).

In all, 299 samples, including 29 duplicates were analyzed for Total PCBs. A total of 19 samples were also collected from the clay pad immediately above the native soil/clay pad contact. A summary of all sample results collected during this investigation can be found in Table 2.1. Figures 2.1 and 2.2 present data boxes of new and prior sample results for the area.

Two locations had sample results greater-than-or-equal to 50 mg/kg ( $\geq 50$  mg/kg) PCBs. Borehole B-253E had a detection of 57.9 mg/kg PCBs at 0–0.5 ft below the clay staging pad and liner (e.g., 0–0.5 ft into the native material). Borehole B-263A had a detection of 52 mg/kg PCBs 0–0.5 ft below the clay staging pad and liner. Four additional borings were completed 7.5 ft out concentrically from each  $\geq 50$  mg/kg PCB sample location to further refine the distribution limits of the  $\geq 50$  mg/kg PCBs material. None of the samples from these additional step-out locations exhibited PCB concentrations  $\geq 50$  mg/kg. Therefore, the two  $\geq 50$  mg/kg PCB locations have been delineated to two separate small areas of less than 15 ft across for each location.

The sample results for the gridded areas indicate that native soil PCB concentrations in the southern and western portions generally have greater and deeper detections than samples collected in the northern and eastern grids; that is, with a few exceptions, sample concentrations generally decreased with distance away from the creek. The data also corresponded well to the previous delineation samples, where concentrations found beyond the original delineation limit were less than the cleanup criteria of 1.8 mg/kg PCBs, and those just inside the limit generally were  $< 1.8$  mg/kg PCBs or slightly  $> 1.8$  mg/kg PCBs.

### 3.0 PRESCRIPTIVE REMOVAL

Based on the results described in Section 2 and outlined on the attached Figures, GM is proposing to complete the remaining excavation and material handling on a prescriptive basis as described below.

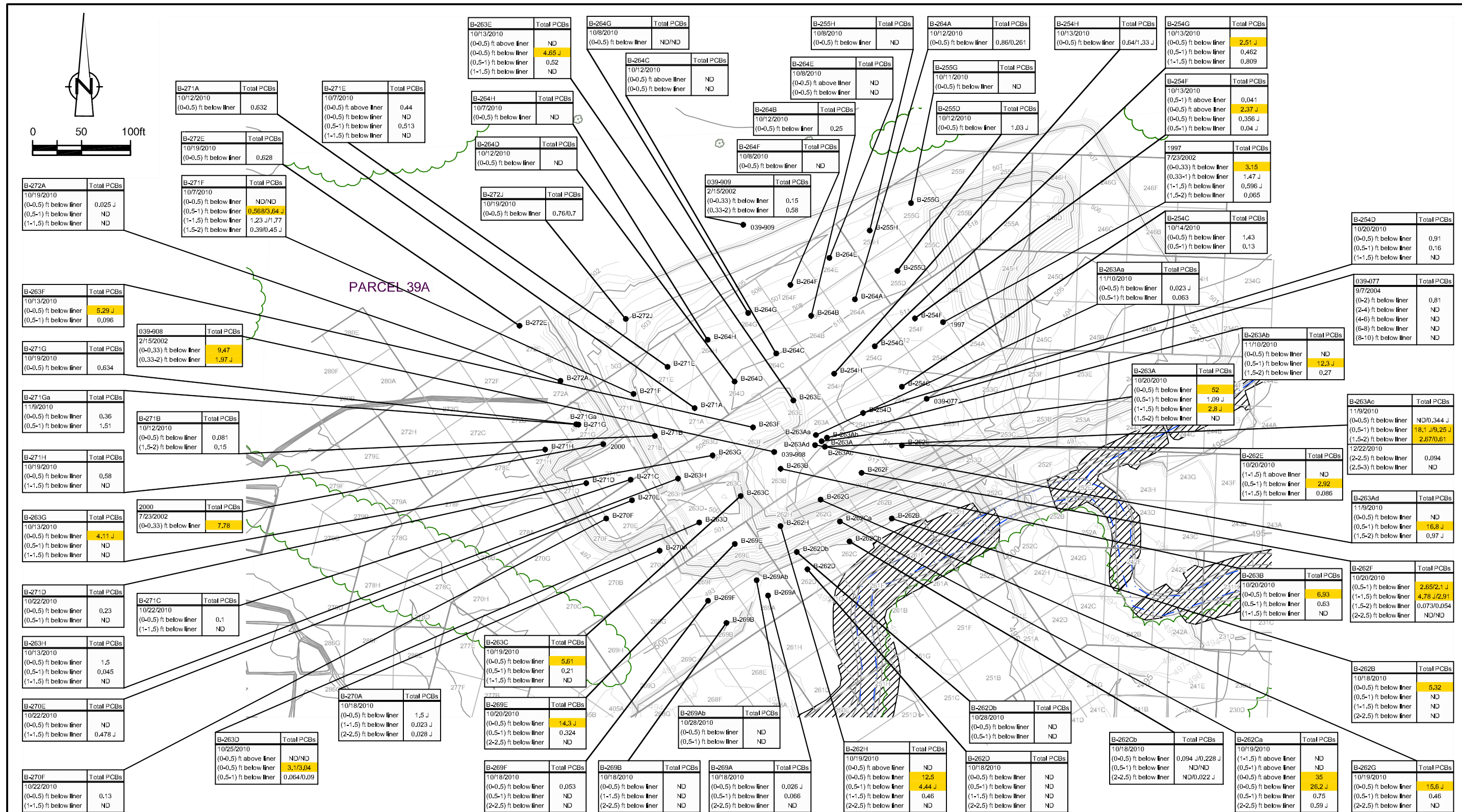
For the remaining grids where removal has not yet been completed:

- Where soil results for a grid area are  $> 1.8$  mg/kg PCBs, excavation of PCB impacted materials will be performed after the existing clay pad overlying the native material is removed to within approximately 0.5 ft above the existing liner. This clean clay pad material will be segregated from the contaminated native soil requiring removal. For grids to be excavated, the remaining approximate 0.5 ft of clay material above the liner will be excavated and disposed with the impacted native material.
- Removal of  $\geq 50$  mg/kg PCB soil will be completed first at two locations indicated on Figure 3.1 to a width and length of approximately 15 ft by 15 ft (7.5 ft radially out to the next sample location below 50 mg/kg), and depth of 0.5 ft below the native ground surface based on the sample results. The  $\geq 50$  mg/kg PCB soil material will be directly loaded into trucks and transported to the previously approved Heritage Industrial Services landfill in Roachdale, IN.
- Where prior or new delineation sample results are  $> 1.8$  mg/kg PCBs but  $< 50$  mg/kg PCBs, excavation of the entire subject sampling grid of approximately 50 ft by 50 ft will be completed to the upper depth of a sample collected within the grid that is  $\leq 1.8$  mg/kg PCBs (i.e., the entire depth interval for samples  $> 1.8$  mg/kg PCBs would be removed within the entire 50 ft by 50 ft grid.).
- If a prior delineation sample results falls along a grid line, half of the adjoining grid will be removed such that a minimum area of approximately 50 ft by 50 ft around the sample point is removed.

- The initial delineation sample result of 1.97 mg/kg PCBs collected 0.33 – 2 ft BGS at the 2002 location 039-908 was not more specifically delineated to 0.5 foot intervals in the last 2010 sampling effort. In the vicinity of 039-908, the 2010 sampling results generally identified the highest results are within 0.5 ft below the native surface with a sharp concentration decrease observed beyond 0.5 ft into the native soil in the nearby grids. As the only other location to be removed to a 2 ft depth is a location with  $\geq 50$  mg/kg PCBs, it is believed the soil  $>1.8$  mg/kg PCBs in the historical sample was likely constrained to the first several inches of the 1.66 ft sample length. Therefore, additional incremental sampling was conducted immediately adjacent to the location 039-908, prior to finalizing the depth of excavation in the approximate 50 ft by 50 ft area surrounding location 039-908 (hatched area on Figure 3.1). Borehole 039-908a was advanced on March 16, 2011 and four samples were collected at a location adjacent to 039-908 to depths below native surface of 0.5 – 1 ft, 1 – 1.5 ft, 1.5 – 2 ft, and 2 – 2.5 ft. All four samples were analyzed for PCBs on a rush turn-around-time. Preliminary results for all four sample depths were provided to U.S. EPA on March 18, 2011, and are also included in Table 2.1 (all  $<1.8$  mg/kg PCBs). As a result it is proposed that the 50 ft by 50 ft area surrounding location 039-908 will be excavated to a depth of 0.5 ft below native surface..
- An additional sample was collected from location 039-076a at 4 - 4.5 ft below native ground surface to confirm the adjacent location 039-076 met the cleanup criteria due to previous sample results that were qualified as rejected for the non-detect Aroclors due to low surrogate recovery for one of the two surrogates used in PCB analysis. The result for this additional sample was non-detect for PCBs ( $<0.044$  mg/kg), confirming that no removal is required at this location to meet the cleanup criteria.
- Please note that a portion of Grid 244C had been previously removed to meet the 1.8 mg/kg PCB criteria, only the remaining portion of the gridded area will be removed during this excavation effort.
- Portions of grids lying within 2 ft of the creek channel will be excavated to the upper depth of the sample within the grid that is  $\leq 1$  mg/kg PCBs (grids 244D and 244E).
- All soil  $>1.8$  mg/kg PCBs but  $<50$  mg/kg PCBs removed from the Staging Area G area will be transported by truck to the GM CETC Bedford Facility and consolidated within the East Plant Area as part of the on-going Interim Measure at the facility.
- Where prior delineation and new delineation sample results are  $\leq 1.8$  mg/kg PCBs, no excavation and no further sampling is proposed and the grid will be considered to meet the cleanup criteria.

Based on prior site experience, the fact that there are no houses in the immediate vicinity, and due to the relatively small area of  $\geq 50$  mg/kg PCBs soil to be removed, perimeter air monitoring will not be conducted, but the contractor will perform real-time air monitoring for the duration. Where practical, soil will be placed directly into on-road haul trucks to minimize material handling and no stockpile sampling is proposed.





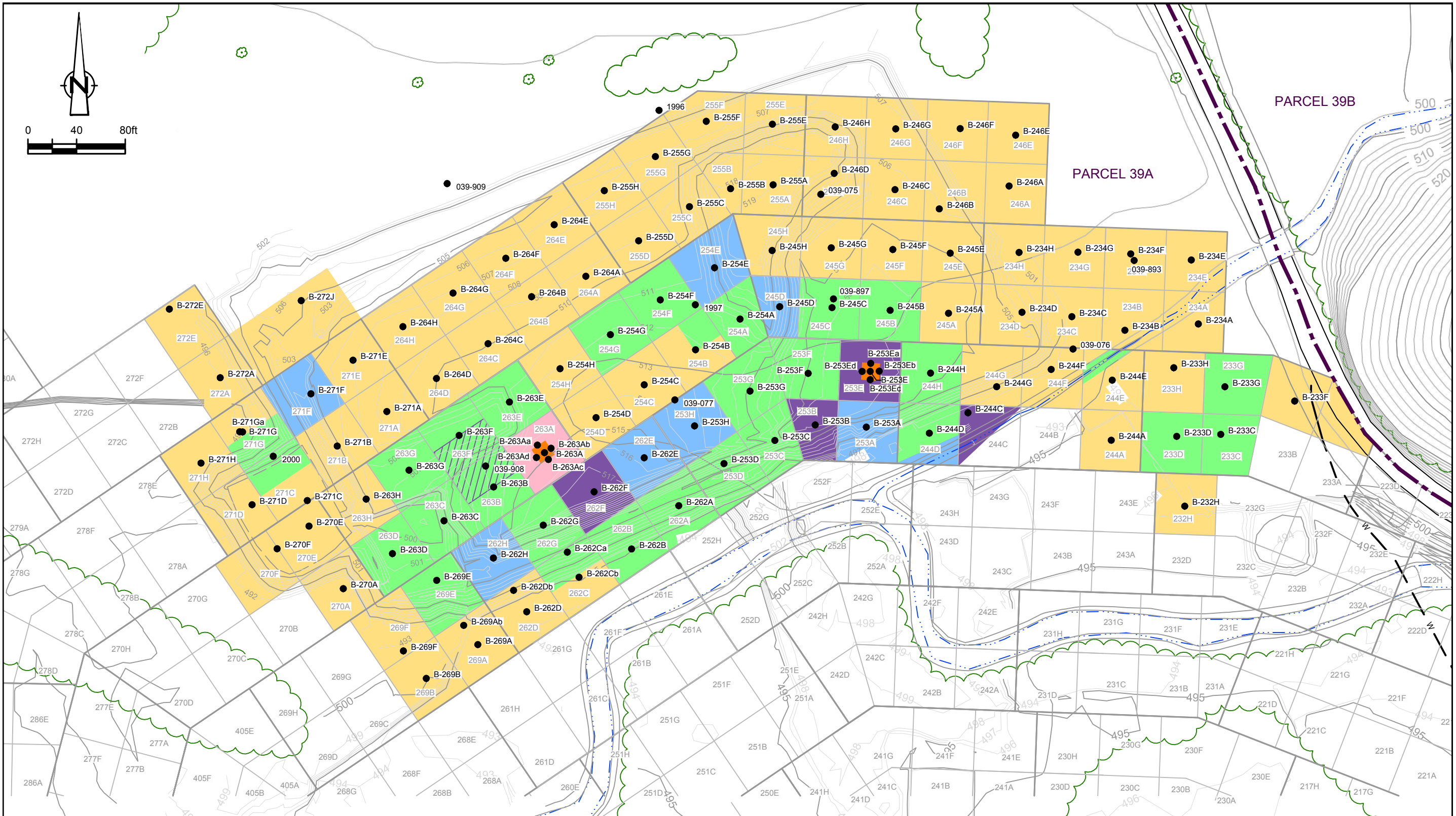
SOURCE: BASE MAP COMPLETED BY AIR-LAND SURVEYS, FLINT, MI. APRIL 2001 AND CRA SURVEYS 2002 TO 2005.

NOTE: PROPERTY BOUNDARY LOCATIONS APPROXIMATED FROM THE LAWRENCE COUNTY SURVEY PLATS. LOCATIONS MAY NOT ACCURATELY REPRESENT THE TRUE BOUNDARIES.

B-264F 10/8/2010 (0-0.5) ft below liner ND  
 SAMPLE IDENTIFICATION  
 PARAMETER  
 PCB CONCENTRATION (mg/kg)  
 DATE SAMPLE TAKEN AND SAMPLE DEPTH

figure 2.1  
 DELINEATION ANALYTICAL RESULTS SUMMARY  
 DOWNSTREAM PARCELS RA: ADDENDUM NO.3  
 GM CETC BEDFORD FACILITY  
 Bedford, Indiana





SOURCE: BASE MAP COMPLETED BY AIR-LAND SURVEYS, FLINT, MI. APRIL 2001 AND CRA SURVEYS 2002 TO 2005.

NOTE: PROPERTY BOUNDARY LOCATIONS APPROXIMATED FROM THE LAWRENCE COUNTY SURVEY PLATS. LOCATIONS MAY NOT ACCURATELY REPRESENT THE TRUE BOUNDARIES.

**LEGEND**

- EXISTING GROUND SURFACE ELEVATION CONTOURS (feet AMSL)
- EXISTING VEGETATION
- APPROXIMATE SURFACE WATER LOCATION
- APPROXIMATE PARCEL BOUNDARY
- SAMPLE LOCATION
- FINAL DEPTH OF REMOVAL SURROUNDING LOCATION 039-908 TO BE DETERMINED

- NO EXCAVATION
- 0 - 0.5ft ≥ 50mg/kg PCBs EXCAVATION
- 0 - 0.5ft EXCAVATION
- 0 - 1.0ft EXCAVATION
- 0 - 1.5ft EXCAVATION
- 0 - 2ft EXCAVATION

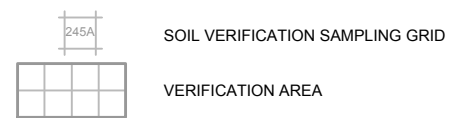


figure 3.1  
**PRESCRIPTIVE EXCAVATION PLAN**  
**DOWNSTREAM PARCELS RA: ADDENDUM NO.3**  
**GM CETC BEDFORD FACILITY**  
*Bedford, Indiana*

**TABLE 2.1**  
**DELINEATION SAMPLE PCBs ANALYTICAL RESULTS SUMMARY**  
**GM CETC BEDFORD FACILITY**  
**BEDFORD, INDIANA**

Area		P039	P039	P039	P039	P039	P039
Sample Location		039-075	039-075	039-075	039-075	039-075	039-076
Sample Identification		S-039-090704-DD-075A	S-039-090704-DD-075B	S-039-090704-DD-075C	S-039-090704-DD-075D	S-039-090704-DD-075E	S-039-090704-DD-076A
Sample Date		9/7/2004	9/7/2004	9/7/2004	9/7/2004	9/7/2004	9/7/2004
Sample Type							
Sample Depth		(0-2) FT	(2-4) FT	(4-6) FT	(6-8) FT	(8-10) FT	(0-2) FT
Liner Depths		(0-2) ft below liner	(2-4) ft below liner	(4-6) ft below liner	(6-8) ft below liner	(8-10) ft below liner	(0-2) ft below liner
	Units						
<b>PCBs</b>							
Aroclor-1016 (PCB-1016)	mg/kg	0.042 UJ	R	R	0.043 UJ	0.041 UJ	R
Aroclor-1221 (PCB-1221)	mg/kg	0.042 UJ	R	R	0.043 UJ	0.041 UJ	R
Aroclor-1232 (PCB-1232)	mg/kg	0.042 UJ	R	R	0.043 UJ	0.041 UJ	R
Aroclor-1242 (PCB-1242)	mg/kg	0.042 UJ	R	R	0.043 UJ	0.041 UJ	R
Aroclor-1248 (PCB-1248)	mg/kg	0.042 UJ	R	R	0.043 UJ	0.041 UJ	0.19 J
Aroclor-1254 (PCB-1254)	mg/kg	0.042 UJ	R	R	0.043 UJ	0.041 UJ	R
Aroclor-1260 (PCB-1260)	mg/kg	0.026 J	0.016 J	R	0.043 UJ	0.041 UJ	0.05 J
Total PCBs	mg/kg	0.026 J	0.016 J	R	ND	ND	0.24 J
<b>General Chemistry</b>							
Total solids	%	79.0	77.2	77.3	75.9	79.6	80.8

## Notes:

U - Not present at or above the associated value.

J - Estimated concentration.

UJ - Estimated reporting limit.

R - Rejected.

<sup>(P)</sup> - Preliminary sample results

**TABLE 2.1**  
**DELINEATION SAMPLE PCBs ANALYTICAL RESULTS SUMMARY**  
**GM CETC BEDFORD FACILITY**  
**BEDFORD, INDIANA**

Area		P039	P039	P039	P039	P039	P039
Sample Location		039-076	039-076	039-076	039-076	039-076	039-076a
Sample Identification		S-039-090704-DD-076B	S-039-090704-DD-076C	S-039-090704-DD-076D	S-039-090704-DD-076E	S-039-090704-DD-076F	S-039-031611-KMV-1803 <sup>(p)</sup>
Sample Date		9/7/2004	9/7/2004	9/7/2004	9/7/2004	9/7/2004	3/16/2011
Sample Type		Duplicate					
Sample Depth		(0-2) FT	(2-4) FT	(4-6) FT	(6-8) FT	(8-10) FT	(6-6.5) FT
Liner Depths		(0-2) ft below liner	(2-4) ft below liner	(4-6) ft below liner	(6-8) ft below liner	(8-10) ft below liner	(4-4.5) ft below liner
	<b>Units</b>						
<b>PCBs</b>							
Aroclor-1016 (PCB-1016)	mg/kg	R	0.22 U	R	R	0.044 UJ	0.044 U
Aroclor-1221 (PCB-1221)	mg/kg	R	0.22 U	R	R	0.044 UJ	0.044 U
Aroclor-1232 (PCB-1232)	mg/kg	R	0.22 U	R	R	0.044 UJ	0.044 U
Aroclor-1242 (PCB-1242)	mg/kg	R	0.22 U	R	R	0.044 UJ	0.044 U
Aroclor-1248 (PCB-1248)	mg/kg	0.14 J	1.3	R	R	0.044 UJ	0.044 U
Aroclor-1254 (PCB-1254)	mg/kg	R	0.22 U	R	R	0.044 UJ	0.044 U
Aroclor-1260 (PCB-1260)	mg/kg	0.042 J	0.18 J	R	R	0.044 UJ	0.044 U
Total PCBs	mg/kg	0.182 J	1.48 J	R	R	ND	ND
<b>General Chemistry</b>							
Total solids	%	80.8	76.6	76.1	74.8	75.4	75

## Notes:

U - Not present at or above the associate

J - Estimated concentration.

UJ - Estimated reporting limit.

R - Rejected.

<sup>(p)</sup> - Preliminary sample results

**TABLE 2.1**  
**DELINEATION SAMPLE PCBs ANALYTICAL RESULTS SUMMARY**  
**GM CETC BEDFORD FACILITY**  
**BEDFORD, INDIANA**

Area		<i>P039</i>	<i>P039</i>	<i>P039</i>	<i>P039</i>	<i>P039</i>	<i>P039_P039_central</i>
Sample Location		<i>039-077</i>	<i>039-077</i>	<i>039-077</i>	<i>039-077</i>	<i>039-077</i>	<i>039-893</i>
Sample Identification		<i>S-039-090704-DD-077A</i>	<i>S-039-090704-DD-077B</i>	<i>S-039-090704-DD-077C</i>	<i>S-039-090704-DD-077D</i>	<i>S-039-090704-DD-077E</i>	<i>S-00-021502-CH-893</i>
Sample Date		<i>9/7/2004</i>	<i>9/7/2004</i>	<i>9/7/2004</i>	<i>9/7/2004</i>	<i>9/7/2004</i>	<i>2/15/2002</i>
Sample Type							
Sample Depth		<i>(0-2) FT</i>	<i>(2-4) FT</i>	<i>(4-6) FT</i>	<i>(6-8) FT</i>	<i>(8-10) FT</i>	<i>(0-0.33) FT</i>
Liner Depths		<i>(0-2) ft below liner</i>	<i>(2-4) ft below liner</i>	<i>(4-6) ft below liner</i>	<i>(6-8) ft below liner</i>	<i>(8-10) ft below liner</i>	<i>(0-0.33) ft below liner</i>
	<i>Units</i>						
<b>PCBs</b>							
Aroclor-1016 (PCB-1016)	mg/kg	0.081 U	0.043 U	0.043 UJ	0.043 UJ	0.043 UJ	0.046 U
Aroclor-1221 (PCB-1221)	mg/kg	0.081 U	0.043 U	0.043 UJ	0.043 UJ	0.043 UJ	0.046 U
Aroclor-1232 (PCB-1232)	mg/kg	0.081 U	0.043 U	0.043 UJ	0.043 UJ	0.043 UJ	0.046 U
Aroclor-1242 (PCB-1242)	mg/kg	0.081 U	0.043 U	0.043 UJ	0.043 UJ	0.043 UJ	0.046 U
Aroclor-1248 (PCB-1248)	mg/kg	0.71	0.043 U	0.043 UJ	0.043 UJ	0.043 UJ	0.046 U
Aroclor-1254 (PCB-1254)	mg/kg	0.081 U	0.043 U	0.043 U	0.043 U	0.043 U	0.22
Aroclor-1260 (PCB-1260)	mg/kg	0.1	0.043 U	0.043 U	0.043 U	0.043 U	0.046 U
Total PCBs	mg/kg	0.81	ND	ND	ND	ND	0.22
<b>General Chemistry</b>							
Total solids	%	81.2	76.9	76.3	76.6	76.8	71.0

## Notes:

U - Not present at or above the associat

J - Estimated concentration.

UJ - Estimated reporting limit.

R - Rejected.

<sup>(P)</sup> - Preliminary sample results

TABLE 2.1

**DELINEATION SAMPLE PCBs ANALYTICAL RESULTS SUMMARY  
GM CETC BEDFORD FACILITY  
BEDFORD, INDIANA**

Area		<i>P039_P039_central</i>	<i>P039_P039_central</i>	<i>P039_P039_central</i>	<i>P039</i>	<i>P039</i>	<i>P039</i>	<i>P039</i>
Sample Location		<i>039-897</i>	<i>039-908</i>	<i>039-908</i>	<i>039-908a</i>	<i>039-908a</i>	<i>039-908a</i>	<i>039-908a</i>
Sample Identification		<i>S-00-021502-JK-897</i>	<i>S-00-021502-JW-908</i>	<i>S-00-021502-JH-908A</i>	<i>S-039-031611-KMV-1787<sup>(p)</sup></i>	<i>S-039-031611-KMV-1788<sup>(p)</sup></i>	<i>S-039-031611-KMV-1794<sup>(p)</sup></i>	<i>S-039-031611-KMV-1789<sup>(p)</sup></i>
Sample Date		<i>2/15/2002</i>	<i>2/15/2002</i>	<i>2/15/2002</i>	<i>3/16/2011</i>	<i>3/16/2011</i>	<i>3/16/2011</i>	<i>3/16/2011</i>
Sample Type							<i>Duplicate</i>	
Sample Depth		<i>(0-0.33) FT</i>	<i>(0-0.33) FT</i>	<i>(0.33-2) FT</i>	<i>(4.5-5) FT</i>	<i>(5-5.5) FT</i>	<i>(5-5.5) FT</i>	<i>(5.5-6) FT</i>
Liner Depths		<i>(0-0.33) ft below liner</i>	<i>(0-0.33) ft below liner</i>	<i>(0.33-2) ft below liner</i>	<i>(0.5-1) ft below liner</i>	<i>(1-1.5) ft below liner</i>	<i>(1-1.5) ft below liner</i>	<i>(1.5-2) ft below liner</i>
	<i>Units</i>							
<b>PCBs</b>								
Aroclor-1016 (PCB-1016)	mg/kg	0.94 U	0.94 U	0.41 U	0.41 U	0.04 U	0.04 U	0.042 U
Aroclor-1221 (PCB-1221)	mg/kg	0.94 U	0.94 U	0.41 U	0.41 U	0.04 U	0.04 U	0.042 U
Aroclor-1232 (PCB-1232)	mg/kg	0.94 U	0.94 U	0.41 U	0.41 U	0.04 U	0.04 U	0.042 U
Aroclor-1242 (PCB-1242)	mg/kg	0.94 U	0.94 U	0.41 U	0.41 U	0.04 U	0.04 U	0.042 U
Aroclor-1248 (PCB-1248)	mg/kg	6.1	8.5	1.8	1.1	0.05	0.24	0.028 J
Aroclor-1254 (PCB-1254)	mg/kg	0.94 U	0.94 U	0.41 U	0.41 U	0.04 U	0.04 U	0.042 U
Aroclor-1260 (PCB-1260)	mg/kg	0.74 J	0.97	0.17 J	0.28 J	0.04 U	0.053	0.042 U
Total PCBs	mg/kg	6.84 J	9.47	1.97 J	1.38 J	0.05	0.293	0.028 J
<b>General Chemistry</b>								
Total solids	%	70.2	69.9	80.2	81.3	81.6	82.1	79.4

## Notes:

U - Not present at or above the associate

J - Estimated concentration.

UJ - Estimated reporting limit.

R - Rejected.

<sup>(p)</sup> - Preliminary sample results

**TABLE 2.1**  
**DELINEATION SAMPLE PCBs ANALYTICAL RESULTS SUMMARY**  
**GM CETC BEDFORD FACILITY**  
**BEDFORD, INDIANA**

Area		<i>P039</i>	<i>P039_P039_central</i>	<i>P039_P039_central</i>	<i>P039_P039_central</i>	<i>P039_P039_central</i>	<i>P039_P039_central</i>	<i>P039_P039_central</i>
Sample Location		<i>039-908a</i>	<i>039-909</i>	<i>039-909</i>	<i>1996</i>	<i>1996</i>	<i>1996</i>	<i>1996</i>
Sample Identification		<i>S-039-031611-KMV-1790</i> <sup>(p)</sup>	<i>S-00-021502-JW-909</i>	<i>S-00-021502-JH-909A</i>	<i>S-072302-JW-1996</i>	<i>S-072302-JW-1996A</i>	<i>S-072302-JW-1996B</i>	<i>S-072302-JW-1996C</i>
Sample Date		<i>3/16/2011</i>	<i>2/15/2002</i>	<i>2/15/2002</i>	<i>7/23/2002</i>	<i>7/23/2002</i>	<i>7/23/2002</i>	<i>7/23/2002</i>
Sample Type								
Sample Depth		<i>(6-6.5) FT</i>	<i>(0-0.33) FT</i>	<i>(0.33-2) FT</i>	<i>(0-0.33) FT</i>	<i>(0.33-1) FT</i>	<i>(1-1.5) FT</i>	<i>(1.5-2) FT</i>
Liner Depths		<i>(2-2.5) ft below liner</i>	<i>(0-0.33) ft below liner</i>	<i>(0.33-2) ft below liner</i>	<i>(0-0.33) ft below liner</i>	<i>(0.33-1) ft below liner</i>	<i>(1-1.5) ft below liner</i>	<i>(1.5-2) ft below liner</i>
	<i>Units</i>							
<b>PCBs</b>								
Aroclor-1016 (PCB-1016)	mg/kg	0.041 U	0.055 U	0.46 U	0.038 U	0.038 U	0.04 U	0.04 U
Aroclor-1221 (PCB-1221)	mg/kg	0.041 U	0.055 U	0.46 U	0.038 U	0.038 U	0.04 U	0.04 U
Aroclor-1232 (PCB-1232)	mg/kg	0.041 U	0.055 U	0.46 U	0.038 U	0.038 U	0.04 U	0.04 U
Aroclor-1242 (PCB-1242)	mg/kg	0.041 U	0.055 U	0.46 U	0.038 U	0.038 U	0.04 U	0.04 U
Aroclor-1248 (PCB-1248)	mg/kg	0.041 U	0.055 U	0.58	0.038 U	0.038 U	0.04 U	0.04 U
Aroclor-1254 (PCB-1254)	mg/kg	0.041 U	0.15	0.46 U	0.038 U	0.038 U	0.04 U	0.04 U
Aroclor-1260 (PCB-1260)	mg/kg	0.041 U	0.055 U	0.46 U	0.038 U	0.038 U	0.04 U	0.04 U
Total PCBs	mg/kg	ND	0.15	0.58	ND	ND	ND	ND
<b>General Chemistry</b>								
Total solids	%	79.6	60.3	71.7	87.1	87.4	83.4	81.7

## Notes:

U - Not present at or above the associated

J - Estimated concentration.

UJ - Estimated reporting limit.

R - Rejected.

<sup>(p)</sup> - Preliminary sample results

**TABLE 2.1**  
**DELINEATION SAMPLE PCBs ANALYTICAL RESULTS SUMMARY**  
**GM CETC BEDFORD FACILITY**  
**BEDFORD, INDIANA**

Area		<i>P039_P039_central</i>	<i>P039_P039_central</i>	<i>P039_P039_central</i>	<i>P039_P039_central</i>	<i>P039_P039_central</i>	<i>P039</i>	<i>P039</i>
Sample Location		1997	1997	1997	1997	2000	B-232H	B-232H
Sample Identification		S-072302-JW-1997	S-072302-JW-1997A	S-072302-JW-1997B	S-072302-JW-1997C	S-072302-JW-2000	S-039-102110-JL-1298	S-039-102110-JL-1299
Sample Date		7/23/2002	7/23/2002	7/23/2002	7/23/2002	7/23/2002	10/21/2010	10/21/2010
Sample Type								
Sample Depth		(0-0.33) FT	(0.33-1) FT	(1-1.5) FT	(1.5-2) FT	(0-0.33) FT	(0-0.5) ft	(0.5-1) ft
Liner Depths		(0-0.33) ft below liner	(0.33-1) ft below liner	(1-1.5) ft below liner	(1.5-2) ft below liner	(0-0.33) ft below liner	(0-0.5) ft below liner	(0.5-1) ft below liner
	<i>Units</i>							
<b>PCBs</b>								
Aroclor-1016 (PCB-1016)	mg/kg	0.21 U	0.2 U	0.081 U	0.041 U	0.48 U	0.037 U	0.039 U
Aroclor-1221 (PCB-1221)	mg/kg	0.21 U	0.2 U	0.081 U	0.041 U	0.48 U	0.037 U	0.039 U
Aroclor-1232 (PCB-1232)	mg/kg	0.21 U	0.2 U	0.081 U	0.041 U	0.48 U	0.037 U	0.039 U
Aroclor-1242 (PCB-1242)	mg/kg	0.21 U	0.2 U	0.081 U	0.041 U	0.48 U	0.037 U	0.039 U
Aroclor-1248 (PCB-1248)	mg/kg	2.8	1.3	0.52	0.065	6.9	0.55	0.039 U
Aroclor-1254 (PCB-1254)	mg/kg	0.21 U	0.2 U	0.081 U	0.041 U	0.48 U	0.037 U	0.039 U
Aroclor-1260 (PCB-1260)	mg/kg	0.35	0.17 J	0.076 J	0.041 U	0.88	0.14	0.039 U
Total PCBs	mg/kg	3.15	1.47 J	0.596 J	0.065	7.78	0.69	ND
<b>General Chemistry</b>								
Total solids	%	76.9	83.8	81.3	80.4	69.1	88.6	84.4

## Notes:

U - Not present at or above the associate

J - Estimated concentration.

UJ - Estimated reporting limit.

R - Rejected.

(P) - Preliminary sample results

**TABLE 2.1**  
**DELINEATION SAMPLE PCBs ANALYTICAL RESULTS SUMMARY**  
**GM CETC BEDFORD FACILITY**  
**BEDFORD, INDIANA**

Area		P039	P039	P039	P039	P039	P039	P039
Sample Location		B-233C	B-233C	B-233D	B-233D	B-233F	B-233G	B-233G
Sample Identification		S-039-102710-JL-1653	S-039-102710-JL-1654	S-039-102710-JL-1640	S-039-102710-JL-1641	S-039-102810-JL-1675	S-039-102710-JL-1630	S-039-102710-JL-1631
Sample Date		10/27/2010	10/27/2010	10/27/2010	10/27/2010	10/28/2010	10/27/2010	10/27/2010
Sample Type								
Sample Depth		(4-4.5) ft	(4.5-5) ft	(3-3.5) ft	(3.5-4) ft	(1-1.5) ft	(4-4.5) ft	(4.5-5) ft
Liner Depths		(0-0.5) ft below liner	(0.5-1) ft below liner	(0-0.5) ft below liner	(0.5-1) ft below liner	(0-0.5) ft below liner	(0-0.5) ft below liner	(0.5-1) ft below liner
	<b>Units</b>							
<b>PCBs</b>								
Aroclor-1016 (PCB-1016)	mg/kg	0.9 U	0.81 U	2.3 U	0.2 U	0.037 U	0.23 U	0.041 U
Aroclor-1221 (PCB-1221)	mg/kg	0.9 U	0.81 U	2.3 U	0.2 U	0.037 U	0.23 U	0.041 U
Aroclor-1232 (PCB-1232)	mg/kg	0.9 U	0.81 U	2.3 U	0.2 U	0.037 U	0.23 U	0.041 U
Aroclor-1242 (PCB-1242)	mg/kg	0.9 U	0.81 U	2.3 U	0.2 U	0.037 U	0.23 U	0.041 U
Aroclor-1248 (PCB-1248)	mg/kg	8.4	1.3	16 J	0.58	0.037 U	3.6	0.46
Aroclor-1254 (PCB-1254)	mg/kg	0.9 U	0.81 U	2.3 U	0.2 U	0.037 U	0.23 U	0.041 U
Aroclor-1260 (PCB-1260)	mg/kg	1	0.81 U	1.4 J	0.15 J	0.037 U	0.57	0.1
Total PCBs	mg/kg	9.4	1.3	17.4 J	0.73 J	ND	4.17	0.56
<b>General Chemistry</b>								
Total solids	%	73.3	81.0	71.3	81.3	89.9	70.5	81.1

## Notes:

U - Not present at or above the associated

J - Estimated concentration.

UJ - Estimated reporting limit.

R - Rejected.

① - Preliminary sample results

**TABLE 2.1**  
**DELINEATION SAMPLE PCBs ANALYTICAL RESULTS SUMMARY**  
**GM CETC BEDFORD FACILITY**  
**BEDFORD, INDIANA**

Area		P039	P039	P039	P039	P039	P039	P039
Sample Location		B-233H	B-233H	B-234A	B-234A	B-234A	B-234B	B-234C
Sample Identification		S-039-102710-JL-1594	S-039-102710-JL-1607	S-039-102710-JL-1620	S-039-102710-JL-1621	S-039-102710-JL-1622	S-039-102710-JL-1584	S-039-102610-JL-1538
Sample Date		10/27/2010	10/27/2010	10/27/2010	10/27/2010	10/27/2010	10/27/2010	10/26/2010
Sample Type			Duplicate					
Sample Depth		(3-3.5) ft	(3-3.5) ft	(3.5-4) ft	(4-4.5) ft	(4.5-5) ft	(3-3.5) ft	(1.5-2) ft
Liner Depths		(0-0.5) ft below liner	(0-0.5) ft below liner	(0-0.5) ft below liner	(0.5-1) ft below liner	(1-1.5) ft below liner	(0-0.5) ft below liner	(0-0.5) ft above liner
	<b>Units</b>							
<b>PCBs</b>								
Aroclor-1016 (PCB-1016)	mg/kg	0.047 U	0.048 U	0.044 U	0.035 U	0.043 U	0.044 U	0.036 U
Aroclor-1221 (PCB-1221)	mg/kg	0.047 U	0.048 U	0.044 U	0.035 U	0.043 U	0.044 U	0.036 U
Aroclor-1232 (PCB-1232)	mg/kg	0.047 U	0.048 U	0.044 U	0.035 U	0.043 U	0.044 U	0.036 U
Aroclor-1242 (PCB-1242)	mg/kg	0.047 U	0.048 U	0.044 U	0.035 U	0.043 U	0.044 U	0.036 U
Aroclor-1248 (PCB-1248)	mg/kg	0.047 U	0.048 U	0.044 U	0.035 U	0.043 U	0.044 U	0.036 U
Aroclor-1254 (PCB-1254)	mg/kg	0.47	0.42	0.073	0.043	0.043 U	0.18	0.036 U
Aroclor-1260 (PCB-1260)	mg/kg	0.047 U	0.048 U	0.044 U	0.035 U	0.043 U	0.044 U	0.036 U
Total PCBs	mg/kg	0.47	0.42	0.073	0.043	ND	0.18	ND
<b>General Chemistry</b>								
Total solids	%	70.6	69.3	74.8	95.3	76.5	75.7	91.8

## Notes:

U - Not present at or above the associated

J - Estimated concentration.

UJ - Estimated reporting limit.

R - Rejected.

<sup>(P)</sup> - Preliminary sample results

**TABLE 2.1**  
**DELINEATION SAMPLE PCBs ANALYTICAL RESULTS SUMMARY**  
**GM CETC BEDFORD FACILITY**  
**BEDFORD, INDIANA**

Area		P039	P039	P039	P039	P039	P039	P039
Sample Location		B-234C	B-234C	B-234D	B-234E	B-234F	B-234G	B-234H
Sample Identification		S-039-102610-JL-1539	S-039-102610-JL-1541	S-039-102110-JL-1345	S-039-102710-JL-1571	S-039-102710-JL-1561	S-039-102710-JL-1549	S-039-102810-JL-1663
Sample Date		10/26/2010	10/26/2010	10/21/2010	10/27/2010	10/27/2010	10/27/2010	10/28/2010
Sample Type								
Sample Depth		(2-2.5) ft	(3-3.5) ft	(5.5-6) ft	(3-3.5) ft	(3-3.5) ft	(3.5-4) ft	(3.5-4) ft
Liner Depths		(0-0.5) ft below liner	(1-1.5) ft below liner	(0-0.5) ft below liner	(0-0.5) ft below liner	(0.5-1) ft below liner	(0.5-1) ft below liner	(0-0.5) ft below liner
	<b>Units</b>							
<b>PCBs</b>								
Aroclor-1016 (PCB-1016)	mg/kg	0.041 U	0.041 U	0.043 U	0.045 U	0.047 U	0.042 U	0.041 U
Aroclor-1221 (PCB-1221)	mg/kg	0.041 U	0.041 U	0.043 U	0.045 U	0.047 U	0.042 U	0.041 U
Aroclor-1232 (PCB-1232)	mg/kg	0.041 U	0.041 U	0.043 U	0.045 U	0.047 U	0.042 U	0.041 U
Aroclor-1242 (PCB-1242)	mg/kg	0.041 U	0.041 U	0.043 U	0.045 U	0.047 U	0.042 U	0.041 U
Aroclor-1248 (PCB-1248)	mg/kg	0.041 U	0.041 U	0.043 U	0.045 U	0.059	0.1	0.051
Aroclor-1254 (PCB-1254)	mg/kg	0.041 U	0.041 U	0.043 U	0.083	0.047 U	0.042 U	0.041 U
Aroclor-1260 (PCB-1260)	mg/kg	0.057	0.041 U	0.043 U	0.045 U	0.03 J	0.042	0.034 J
Total PCBs	mg/kg	0.057	ND	ND	0.083	0.089 J	0.142	0.085 J
<b>General Chemistry</b>								
Total solids	%	80.4	81.1	76.0	73.5	70.4	78.9	80.4

## Notes:

U - Not present at or above the associated

J - Estimated concentration.

UJ - Estimated reporting limit.

R - Rejected.

<sup>(P)</sup> - Preliminary sample results

**TABLE 2.1**  
**DELINEATION SAMPLE PCBs ANALYTICAL RESULTS SUMMARY**  
**GM CETC BEDFORD FACILITY**  
**BEDFORD, INDIANA**

Area		P039	P039	P039	P039	P039	P039	P039
Sample Location		B-244A	B-244A	B-244C	B-244C	B-244C	B-244C	B-244D
Sample Identification		S-039-102110-JL-1310	S-039-102110-JL-1311	S-039-101810-JL-0819	S-039-101810-JL-0820	S-039-101810-JL-0821	S-039-101810-JL-0822	S-039-101810-JL-0806
Sample Date		10/21/2010	10/21/2010	10/18/2010	10/18/2010	10/18/2010	10/18/2010	10/18/2010
Sample Type								
Sample Depth		(0-0.5) ft	(0.5-1) ft	(0.5-1) ft	(1-1.5) ft	(1.5-2) ft	(2-2.5) ft	(0-0.5) ft
Liner Depths		(0-0.5) ft below liner	(0.5-1) ft below liner	(0.5-1) ft below liner	(1-1.5) ft below liner	(1.5-2) ft below liner	(2-2.5) ft below liner	(0-0.5) ft below liner
	Units							
<b>PCBs</b>								
Aroclor-1016 (PCB-1016)	mg/kg	0.039 U	0.041 U	3.8 U	0.75 U	0.038 U	0.04 U	0.37 U
Aroclor-1221 (PCB-1221)	mg/kg	0.039 U	0.041 U	3.8 U	0.75 U	0.038 U	0.04 U	0.37 U
Aroclor-1232 (PCB-1232)	mg/kg	0.039 U	0.041 U	3.8 U	0.75 U	0.038 U	0.04 U	0.37 U
Aroclor-1242 (PCB-1242)	mg/kg	0.039 U	0.041 U	3.8 U	0.75 U	0.038 U	0.04 U	0.37 U
Aroclor-1248 (PCB-1248)	mg/kg	0.039 U	0.054	21 J	7.7	0.12	0.04 U	4.2
Aroclor-1254 (PCB-1254)	mg/kg	0.039 U	0.041 U	3.8 U	0.75 U	0.038 U	0.052	0.37 U
Aroclor-1260 (PCB-1260)	mg/kg	0.039 U	0.041 U	2.4 J	1.5	0.019 J	0.04 U	0.73
Total PCBs	mg/kg	ND	0.054	23.4 J	9.2	0.139 J	0.052	4.93
<b>General Chemistry</b>								
Total solids	%	83.9	80.3	85.9	88.3	87.9	83.5	88.7

Notes:

U - Not present at or above the associated

J - Estimated concentration.

UJ - Estimated reporting limit.

R - Rejected.

<sup>(P)</sup> - Preliminary sample results

**TABLE 2.1**  
**DELINEATION SAMPLE PCBs ANALYTICAL RESULTS SUMMARY**  
**GM CETC BEDFORD FACILITY**  
**BEDFORD, INDIANA**

Area		P039	P039	P039	P039	P039	P039	P039
Sample Location		B-244D	B-244D	B-244D	B-244E	B-244E	B-244F	B-244G
Sample Identification		S-039-101810-JL-0807	S-039-101810-JL-0808	S-039-101810-JL-0810	S-039-102110-JL-1322	S-039-102110-JL-1326	S-039-101810-JL-0842	S-039-101810-JL-0830
Sample Date		10/18/2010	10/18/2010	10/18/2010	10/21/2010	10/21/2010	10/18/2010	10/18/2010
Sample Type								
Sample Depth		(0.5-1) ft	(1-1.5) ft	(2-2.5) ft	(0-0.5) ft	(2-2.5) ft	(0-0.5) ft	(0-0.5) ft
Liner Depths		(0.5-1) ft below liner	(1-1.5) ft below liner	(2-2.5) ft below liner	(0-0.5) ft below liner	(2-2.5) ft below liner	(0-0.5) ft below liner	(0-0.5) ft below liner
	<b>Units</b>							
<b>PCBs</b>								
Aroclor-1016 (PCB-1016)	mg/kg	0.2 U	0.037 U	0.039 U	0.39 U	0.042 U	0.038 U	0.04 U
Aroclor-1221 (PCB-1221)	mg/kg	0.2 U	0.037 U	0.039 U	0.39 U	0.042 U	0.038 U	0.04 U
Aroclor-1232 (PCB-1232)	mg/kg	0.2 U	0.037 U	0.039 U	0.39 U	0.042 U	0.038 U	0.04 U
Aroclor-1242 (PCB-1242)	mg/kg	0.2 U	0.037 U	0.039 U	0.39 U	0.042 U	0.038 U	0.04 U
Aroclor-1248 (PCB-1248)	mg/kg	1.3	0.1	0.14	0.39 U	0.042 U	0.043	0.33
Aroclor-1254 (PCB-1254)	mg/kg	0.2 U	0.037 U	0.039 U	1.6	0.042 U	0.038 U	0.04 U
Aroclor-1260 (PCB-1260)	mg/kg	0.25	0.037 U	0.027 J	0.39 U	0.042 U	0.038 U	0.063
Total PCBs	mg/kg	1.55	0.1	0.167 J	1.6	ND	0.043	0.393
<b>General Chemistry</b>								
Total solids	%	81.3	88.4	84.8	83.6	79.0	86.7	82.2

Notes:

- U - Not present at or above the associated reporting limit.
- J - Estimated concentration.
- UJ - Estimated reporting limit.
- R - Rejected.
- <sup>(P)</sup> - Preliminary sample results

**TABLE 2.1**  
**DELINEATION SAMPLE PCBs ANALYTICAL RESULTS SUMMARY**  
**GM CETC BEDFORD FACILITY**  
**BEDFORD, INDIANA**

Area		P039	P039	P039	P039	P039	P039	P039
Sample Location		B-244G	B-244G	B-244H	B-244H	B-244H	B-244H	B-244H
Sample Identification		S-039-101810-JL-0832	S-039-101810-JL-0834	S-039-102110-JL-1253	S-039-102110-JL-1273	S-039-102110-JL-1254	S-039-102110-JL-1274	S-039-102110-JL-1255
Sample Date		10/18/2010	10/18/2010	10/21/2010	10/21/2010	10/21/2010	10/21/2010	10/21/2010
Sample Type					Duplicate		Duplicate	
Sample Depth		(1-1.5) ft	(2-2.5) ft	(5.5-6) ft	(5.5-6) ft	(6-6.5) ft	(6-6.5) ft	(6.5-7) ft
Liner Depths		(1-1.5) ft below liner	(2-2.5) ft below liner	(0-0.5) ft below liner	(0-0.5) ft below liner	(0.5-1) ft below liner	(0.5-1) ft below liner	(1-1.5) ft below liner
	<b>Units</b>							
<b>PCBs</b>								
Aroclor-1016 (PCB-1016)	mg/kg	0.039 U	0.04 U	0.4 U	0.4 U	0.04 U	0.04 U	0.041 U
Aroclor-1221 (PCB-1221)	mg/kg	0.039 U	0.04 U	0.4 U	0.4 U	0.04 U	0.04 U	0.041 U
Aroclor-1232 (PCB-1232)	mg/kg	0.039 U	0.04 U	0.4 U	0.4 U	0.04 U	0.04 U	0.041 U
Aroclor-1242 (PCB-1242)	mg/kg	0.039 U	0.04 U	0.4 U	0.4 U	0.04 U	0.04 U	0.041 U
Aroclor-1248 (PCB-1248)	mg/kg	0.062	0.094	4.7	3	0.14 J	0.082	0.16
Aroclor-1254 (PCB-1254)	mg/kg	0.039 U	0.04 U	0.4 U	0.4 U	0.04 U	0.04 U	0.041 U
Aroclor-1260 (PCB-1260)	mg/kg	0.039 U	0.04 U	0.69	0.46	0.026 J	0.04 U	0.041 U
Total PCBs	mg/kg	0.062	0.094	5.39	3.46	0.166 J	0.082	0.16
<b>General Chemistry</b>								
Total solids	%	84.6	83.3	82.1	82.2	82.6	81.8	80.7

Notes:

U - Not present at or above the associated reporting limit.

J - Estimated concentration.

UJ - Estimated reporting limit.

R - Rejected.

<sup>(P)</sup> - Preliminary sample results

**TABLE 2.1**  
**DELINEATION SAMPLE PCBs ANALYTICAL RESULTS SUMMARY**  
**GM CETC BEDFORD FACILITY**  
**BEDFORD, INDIANA**

Area		P039	P039	P039	P039	P039	P039	P039
Sample Location		B-244H	B-244H	B-244H	B-245A	B-245A	B-245A	B-245B
Sample Identification		S-039-102110-JL-1275	S-039-102110-JL-1257	S-039-102110-JL-1277	S-039-101510-JL-0694	S-039-101510-JL-0695	S-039-101510-JL-0697	S-039-101510-JL-0709
Sample Date		10/21/2010	10/21/2010	10/21/2010	10/15/2010	10/15/2010	10/15/2010	10/15/2010
Sample Type		Duplicate		Duplicate				
Sample Depth		(6.5-7) ft	(7.5-8) ft	(7.5-8) ft	(2.5-3) ft	(3-3.5) ft	(4-4.5) ft	(3.5-4) ft
Liner Depths		(1-1.5) ft below liner	(2-2.5) ft below liner	(2-2.5) ft below liner	(0-0.5) ft above liner	(0-0.5) ft below liner	(1-1.5) ft below liner	(0-0.5) ft below liner
	Units							
<b>PCBs</b>								
Aroclor-1016 (PCB-1016)	mg/kg	0.041 U	0.04 U	0.04 U	0.043 U	0.21 U	0.041 U	0.41 U
Aroclor-1221 (PCB-1221)	mg/kg	0.041 U	0.04 U	0.04 U	0.043 U	0.21 U	0.041 U	0.41 U
Aroclor-1232 (PCB-1232)	mg/kg	0.041 U	0.04 U	0.04 U	0.043 U	0.21 U	0.041 U	0.41 U
Aroclor-1242 (PCB-1242)	mg/kg	0.041 U	0.04 U	0.04 U	0.043 U	0.21 U	0.041 U	0.41 U
Aroclor-1248 (PCB-1248)	mg/kg	0.088	0.065	0.031 J	0.043 U	0.21 U	0.041 U	4.7
Aroclor-1254 (PCB-1254)	mg/kg	0.041 U	0.04 U	0.04 U	0.043 U	0.29	0.041 U	0.41 U
Aroclor-1260 (PCB-1260)	mg/kg	0.041 U	0.04 U	0.04 U	0.043 U	0.21 U	0.041 U	0.59
Total PCBs	mg/kg	0.088	0.065	0.031 J	ND	0.29	ND	5.29
<b>General Chemistry</b>								
Total solids	%	81.0	81.6	81.8	77.6	79.7	80.0	81.1

## Notes:

U - Not present at or above the associat

J - Estimated concentration.

UJ - Estimated reporting limit.

R - Rejected.

<sup>(P)</sup> - Preliminary sample results

**TABLE 2.1**  
**DELINEATION SAMPLE PCBs ANALYTICAL RESULTS SUMMARY**  
**GM CETC BEDFORD FACILITY**  
**BEDFORD, INDIANA**

Area		P039	P039	P039	P039	P039	P039	P039
Sample Location		B-245B	B-245C	B-245C	B-245C	B-245D	B-245D	B-245D
Sample Identification		S-039-101510-JL-0710	S-039-101510-JL-0669	S-039-101510-JL-0670	S-039-101510-JL-0671	S-039-101410-JL-0576	S-039-101410-JL-0577	S-039-101410-JL-0578
Sample Date		10/15/2010	10/15/2010	10/15/2010	10/15/2010	10/14/2010	10/14/2010	10/14/2010
Sample Type								
Sample Depth		(4-4.5) ft	(4-4.5) ft	(4.5-5) ft	(5-5.5) ft	(3-3.5) ft	(3.5-4) ft	(4-4.5) ft
Liner Depths		(0.5-1) ft below liner	(0-0.5) ft below liner	(0.5-1) ft below liner	(1-1.5) ft below liner	(0-0.5) ft below liner	(0.5-1) ft below liner	(1-1.5) ft below liner
	Units							
<b>PCBs</b>								
Aroclor-1016 (PCB-1016)	mg/kg	0.043 U	0.043 U	0.041 U	0.042 U	0.44 U	0.83 U	0.041 U
Aroclor-1221 (PCB-1221)	mg/kg	0.043 U	0.043 U	0.041 U	0.042 U	0.44 U	0.83 U	0.041 U
Aroclor-1232 (PCB-1232)	mg/kg	0.043 U	0.043 U	0.041 U	0.042 U	0.44 U	0.83 U	0.041 U
Aroclor-1242 (PCB-1242)	mg/kg	0.043 U	0.043 U	0.041 U	0.042 U	0.44 U	0.83 U	0.041 U
Aroclor-1248 (PCB-1248)	mg/kg	0.41	0.043 U	0.048	0.085	4.7	4.3	0.14
Aroclor-1254 (PCB-1254)	mg/kg	0.043 U	0.043 U	0.041 U	0.042 U	0.44 U	0.83 U	0.041 U
Aroclor-1260 (PCB-1260)	mg/kg	0.038 J	0.043 U	0.041 U	0.042 U	0.47	0.55 J	0.041 U
Total PCBs	mg/kg	0.448 J	ND	0.048	0.085	5.17	4.85 J	0.14
<b>General Chemistry</b>								
Total solids	%	77.0	77.6	80.5	78.3	75.0	79.4	80.1

Notes:

U - Not present at or above the associated

J - Estimated concentration.

UJ - Estimated reporting limit.

R - Rejected.

<sup>(P)</sup> - Preliminary sample results

**TABLE 2.1**  
**DELINEATION SAMPLE PCBs ANALYTICAL RESULTS SUMMARY**  
**GM CETC BEDFORD FACILITY**  
**BEDFORD, INDIANA**

Area		P039	P039	P039	P039	P039	P039	P039
Sample Location		B-245D	B-245E	B-245E	B-245F	B-245G	B-245H	B-245H
Sample Identification		S-039-101410-JL-0579	S-039-102110-JL-1289	S-039-102110-JL-1291	S-039-101510-JL-0685	S-039-101410-JL-0561	S-039-101410-JL-0532	S-039-101410-JL-0533
Sample Date		10/14/2010	10/21/2010	10/21/2010	10/15/2010	10/14/2010	10/14/2010	10/14/2010
Sample Type								
Sample Depth		(4.5-5) ft	(3.5-4) ft	(4.5-5) ft	(4-4.5) ft	(3-3.5) ft	(3.5-4) ft	(4-4.5) ft
Liner Depths		(1.5-2) ft below liner	(0-0.5) ft below liner	(1-1.5) ft below liner	(0-0.5) ft below liner	(0-0.5) ft below liner	(0-0.5) ft below liner	(0.5-1) ft below liner
	<b>Units</b>							
<b>PCBs</b>								
Aroclor-1016 (PCB-1016)	mg/kg	0.041 U	0.043 U	0.041 U	0.046 U	0.045 U	0.096 U	0.042 U
Aroclor-1221 (PCB-1221)	mg/kg	0.041 U	0.043 U	0.041 U	0.046 U	0.045 U	0.096 U	0.042 U
Aroclor-1232 (PCB-1232)	mg/kg	0.041 U	0.043 U	0.041 U	0.046 U	0.045 U	0.096 U	0.042 U
Aroclor-1242 (PCB-1242)	mg/kg	0.041 U	0.043 U	0.041 U	0.046 U	0.045 U	0.096 U	0.042 U
Aroclor-1248 (PCB-1248)	mg/kg	0.041 U	0.043 U	0.027 J	0.046 U	0.045 U	0.096 U	0.16
Aroclor-1254 (PCB-1254)	mg/kg	0.041 U	0.2	0.041 U	0.046 U	0.26	0.63	0.042 U
Aroclor-1260 (PCB-1260)	mg/kg	0.041 U	0.043 U	0.041 U	0.046 U	0.045 U	0.096 U	0.042 U
Total PCBs	mg/kg	ND	0.2	0.027 J	ND	0.26	0.63	0.16
<b>General Chemistry</b>								
Total solids	%	79.7	76.7	79.6	71.3	73.4	68.7	78.6

Notes:

- U - Not present at or above the associated reporting limit.
- J - Estimated concentration.
- UJ - Estimated reporting limit.
- R - Rejected.
- <sup>(P)</sup> - Preliminary sample results

**TABLE 2.1**  
**DELINEATION SAMPLE PCBs ANALYTICAL RESULTS SUMMARY**  
**GM CETC BEDFORD FACILITY**  
**BEDFORD, INDIANA**

Area		P039	P039	P039	P039	P039	P039	P039
Sample Location		B-246A	B-246B	B-246C	B-246C	B-246C	B-246D	B-246D
Sample Identification		S-039-102510-JL-1513	S-039-102510-JL-1493	S-039-101410-JL-0546	S-039-101410-JL-0547	S-039-101410-JL-0548	S-039-101110-JL-0197	S-039-101110-JL-0198
Sample Date		10/25/2010	10/25/2010	10/14/2010	10/14/2010	10/14/2010	10/11/2010	10/11/2010
Sample Type								
Sample Depth		(3-3.5) ft	(7.5-8) ft	(3.5-4) ft	(4-4.5) ft	(4.5-5) ft	(4-4.5) ft	(4.5-5) ft
Liner Depths		(0-0.5) ft below liner	(0-0.5) ft below liner	(0-0.5) ft below liner	(0.5-1) ft below liner	(1-1.5) ft below liner	(0-0.5) ft below liner	(0.5-1) ft below liner
	<b>Units</b>							
<b>PCBs</b>								
Aroclor-1016 (PCB-1016)	mg/kg	0.042 U	0.042 U	0.042 U	0.042 U	0.043 U	0.041 U	0.043 U
Aroclor-1221 (PCB-1221)	mg/kg	0.042 U	0.042 U	0.042 U	0.042 U	0.043 U	0.041 U	0.043 U
Aroclor-1232 (PCB-1232)	mg/kg	0.042 U	0.042 U	0.042 U	0.042 U	0.043 U	0.041 U	0.043 U
Aroclor-1242 (PCB-1242)	mg/kg	0.042 U	0.042 U	0.042 U	0.042 U	0.043 U	0.041 U	0.043 U
Aroclor-1248 (PCB-1248)	mg/kg	0.042 U	0.042 U	0.029 J	0.042	0.036 J	0.041 U	0.051
Aroclor-1254 (PCB-1254)	mg/kg	0.1	0.1	0.042 U	0.042 U	0.043 U	0.041 U	0.043 U
Aroclor-1260 (PCB-1260)	mg/kg	0.042 U	0.042 U	0.027 J	0.042 U	0.043 U	0.041 U	0.026 J
Total PCBs	mg/kg	0.1	0.1	0.056 J	0.042	0.036 J	ND	0.077 J
<b>General Chemistry</b>								
Total solids	%	78.6	78.0	79.0	78.2	77.5	80.0	76.6

Notes:

- U - Not present at or above the associated reporting limit.
- J - Estimated concentration.
- UJ - Estimated reporting limit.
- R - Rejected.
- <sup>(P)</sup> - Preliminary sample results

**TABLE 2.1**  
**DELINEATION SAMPLE PCBs ANALYTICAL RESULTS SUMMARY**  
**GM CETC BEDFORD FACILITY**  
**BEDFORD, INDIANA**

Area		P039	P039	P039	P039	P039	P039	P039
Sample Location		B-246E	B-246F	B-246G	B-246H	B-246H	B-253A	B-253A
Sample Identification		S-039-102610-JL-1526	S-039-102510-JL-1503	S-039-102510-JL-1469	S-039-101110-JL-0179	S-039-101110-JL-0180	S-039-102110-JL-1232	S-039-102110-JL-1233
Sample Date		10/26/2010	10/25/2010	10/25/2010	10/11/2010	10/11/2010	10/21/2010	10/21/2010
Sample Type								
Sample Depth		(3-3.5) ft	(3-3.5) ft	(6.5-7) ft	(3.5-4) ft	(4-4.5) ft	(5-5.5) ft	(5.5-6) ft
Liner Depths		(0-0.5) ft below liner	(0-0.5) ft below liner	(0-0.5) ft below liner	(0-0.5) ft above liner	(0-0.5) ft below liner	(0-0.5) ft below liner	(0.5-1) ft below liner
	<b>Units</b>							
<b>PCBs</b>								
Aroclor-1016 (PCB-1016)	mg/kg	0.045 U	0.043 U	0.044 U	0.043 U	0.044 U	0.45 U	0.41 U
Aroclor-1221 (PCB-1221)	mg/kg	0.045 U	0.043 U	0.044 U	0.043 U	0.044 U	0.45 U	0.41 U
Aroclor-1232 (PCB-1232)	mg/kg	0.045 U	0.043 U	0.044 U	0.043 U	0.044 U	0.45 U	0.41 U
Aroclor-1242 (PCB-1242)	mg/kg	0.045 U	0.043 U	0.044 U	0.043 U	0.044 U	0.45 U	0.41 U
Aroclor-1248 (PCB-1248)	mg/kg	0.045 U	0.043 U	0.044 U	0.043 U	0.044 U	6.4	4.3
Aroclor-1254 (PCB-1254)	mg/kg	0.045 U	0.036 J	0.044 U	0.043 U	0.044 U	0.45 U	0.41 U
Aroclor-1260 (PCB-1260)	mg/kg	0.045 U	0.043 U	0.044 U	0.043 U	0.044 U	0.89	0.61
Total PCBs	mg/kg	ND	0.036 J	ND	ND	ND	7.29	4.91
<b>General Chemistry</b>								
Total solids	%	73.0	76.1	75.2	77.3	74.3	73.9	80.0

Notes:

- U - Not present at or above the associated reporting limit.
- J - Estimated concentration.
- UJ - Estimated reporting limit.
- R - Rejected.
- <sup>(P)</sup> - Preliminary sample results

**TABLE 2.1**  
**DELINEATION SAMPLE PCBs ANALYTICAL RESULTS SUMMARY**  
**GM CETC BEDFORD FACILITY**  
**BEDFORD, INDIANA**

Area		P039	P039	P039	P039	P039	P039	P039
Sample Location		B-253A	B-253B	B-253B	B-253B	B-253B	B-253B	B-253C
Sample Identification		S-039-102110-JL-1234	S-039-102110-JL-1198	S-039-102110-JL-1199	S-039-102110-JL-1200	S-039-102110-JL-1201	S-039-102110-JL-1202	S-039-102110-JL-1182
Sample Date		10/21/2010	10/21/2010	10/21/2010	10/21/2010	10/21/2010	10/21/2010	10/21/2010
Sample Type								
Sample Depth		(6-6.5) ft	(3-3.5) ft	(3.5-4) ft	(4-4.5) ft	(4.5-5) ft	(5-5.5) ft	(3-3.5) ft
Liner Depths		(1-1.5) ft below liner	(0-0.5) ft below liner	(0.5-1) ft below liner	(1-1.5) ft below liner	(1.5-2) ft below liner	(2-2.5) ft below liner	(0-0.5) ft above liner
	<b>Units</b>							
<b>PCBs</b>								
Aroclor-1016 (PCB-1016)	mg/kg	0.044 U	0.24 U	0.42 U	0.21 U	0.04 U	0.042 U	0.04 U
Aroclor-1221 (PCB-1221)	mg/kg	0.044 U	0.24 U	0.42 U	0.21 U	0.04 U	0.042 U	0.04 U
Aroclor-1232 (PCB-1232)	mg/kg	0.044 U	0.24 U	0.42 U	0.21 U	0.04 U	0.042 U	0.04 U
Aroclor-1242 (PCB-1242)	mg/kg	0.044 U	0.24 U	0.42 U	0.21 U	0.04 U	0.042 U	0.04 U
Aroclor-1248 (PCB-1248)	mg/kg	0.19 J	2.3	5.1	1.7	0.27	0.042 U	0.04 U
Aroclor-1254 (PCB-1254)	mg/kg	0.044 U	0.24 U	0.42 U	0.21 U	0.04 U	0.042 U	0.04 U
Aroclor-1260 (PCB-1260)	mg/kg	0.037 J	0.24 U	0.66	0.44	0.055	0.042 U	0.04 U
Total PCBs	mg/kg	0.227 J	2.3	5.76	2.14	0.325	ND	ND
<b>General Chemistry</b>								
Total solids	%	74.7	69.4	78.4	78.7	82.1	78.5	81.5

Notes:

- U - Not present at or above the associated reporting limit.
- J - Estimated concentration.
- UJ - Estimated reporting limit.
- R - Rejected.
- <sup>(P)</sup> - Preliminary sample results

**TABLE 2.1**  
**DELINEATION SAMPLE PCBs ANALYTICAL RESULTS SUMMARY**  
**GM CETC BEDFORD FACILITY**  
**BEDFORD, INDIANA**

Area		P039	P039	P039	P039	P039	P039	P039
Sample Location		B-253C	B-253C	B-253C	B-253D	B-253D	B-253D	B-253E
Sample Identification		S-039-102110-JL-1183	S-039-102110-JL-1184	S-039-102110-JL-1185	S-039-102010-JL-1153	S-039-102010-JL-1154	S-039-102010-JL-1157	S-039-102110-JL-1211
Sample Date		10/21/2010	10/21/2010	10/21/2010	10/20/2010	10/20/2010	10/20/2010	10/21/2010
Sample Type								
Sample Depth		(3.5-4) ft	(4-4.5) ft	(4.5-5) ft	(3.5-4) ft	(4-4.5) ft	(5.5-6) ft	(2.5-3) ft
Liner Depths		(0-0.5) ft below liner	(0.5-1) ft below liner	(1-1.5) ft below liner	(0-0.5) ft below liner	(0.5-1) ft below liner	(2-2.5) ft below liner	(0-0.5) ft above liner
	<b>Units</b>							
<b>PCBs</b>								
Aroclor-1016 (PCB-1016)	mg/kg	2.1 U	0.2 U	0.04 U	2.1 U	0.041 U	0.041 U	0.04 U
Aroclor-1221 (PCB-1221)	mg/kg	2.1 U	0.2 U	0.04 U	2.1 U	0.041 U	0.041 U	0.04 U
Aroclor-1232 (PCB-1232)	mg/kg	2.1 U	0.2 U	0.04 U	2.1 U	0.041 U	0.041 U	0.04 U
Aroclor-1242 (PCB-1242)	mg/kg	2.1 U	0.2 U	0.04 U	2.1 U	0.041 U	0.041 U	0.04 U
Aroclor-1248 (PCB-1248)	mg/kg	12	0.86	0.08	20	0.041 U	0.041 U	0.04 U
Aroclor-1254 (PCB-1254)	mg/kg	2.1 U	0.2 U	0.04 U	2.1 U	0.041 U	0.041 U	0.04 U
Aroclor-1260 (PCB-1260)	mg/kg	2.1 U	0.2 U	0.04 U	1.4 J	0.041 U	0.041 U	0.04 U
Total PCBs	mg/kg	12	0.86	0.08	21.4 J	ND	ND	ND
<b>General Chemistry</b>								
Total solids	%	79.6	82.0	81.7	79.9	80.6	79.7	83.5

Notes:

- U - Not present at or above the associated reporting limit.
- J - Estimated concentration.
- UJ - Estimated reporting limit.
- R - Rejected.
- <sup>(P)</sup> - Preliminary sample results

**TABLE 2.1**  
**DELINEATION SAMPLE PCBs ANALYTICAL RESULTS SUMMARY**  
**GM CETC BEDFORD FACILITY**  
**BEDFORD, INDIANA**

Area		P039	P039	P039	P039	P039	P039	P039
Sample Location		B-253E	B-253E	B-253E	B-253Ea	B-253Ea	B-253Eb	B-253Eb
Sample Identification		S-039-102110-JL-1212	S-039-102110-JL-1213	S-039-102110-JL-1214	S-039-110910-JL-1742	S-039-110910-JL-1743	S-039-110910-JL-1738	S-039-110910-JL-1739
Sample Date		10/21/2010	10/21/2010	10/21/2010	11/9/2010	11/9/2010	11/9/2010	11/9/2010
Sample Type								
Sample Depth		(3-3.5) ft	(3.5-4) ft	(4-4.5) ft	(3-3.5) ft	(3.5-4) ft	(3-3.5) ft	(3.5-4) ft
Liner Depths		(0-0.5) ft below liner	(0.5-1) ft below liner	(1-1.5) ft below liner	(0-0.5) ft below liner	(0.5-1) ft below liner	(0-0.5) ft below liner	(0.5-1) ft below liner
	Units							
<b>PCBs</b>								
Aroclor-1016 (PCB-1016)	mg/kg	4.4 U	0.81 U	0.2 U	0.039 U	0.04 U	0.04 U	0.04 U
Aroclor-1221 (PCB-1221)	mg/kg	4.4 U	0.81 U	0.2 U	0.039 U	0.04 U	0.04 U	0.04 U
Aroclor-1232 (PCB-1232)	mg/kg	4.4 U	0.81 U	0.2 U	0.039 U	0.04 U	0.04 U	0.04 U
Aroclor-1242 (PCB-1242)	mg/kg	4.4 U	0.81 U	0.2 U	0.039 U	0.04 U	0.04 U	0.04 U
Aroclor-1248 (PCB-1248)	mg/kg	55 J	4.2	0.88	0.039 U	0.04 U	0.04 U	0.04 U
Aroclor-1254 (PCB-1254)	mg/kg	4.4 U	0.81 U	0.2 U	0.039 U	0.04 U	0.04 U	0.04 U
Aroclor-1260 (PCB-1260)	mg/kg	2.9 J	0.81 U	0.12 J	0.039 U	0.04 U	0.04 U	0.04 U
Total PCBs	mg/kg	57.9 J	4.2	1 J	ND	ND	ND	ND
<b>General Chemistry</b>								
Total solids	%	74.4	81.0	81.6	84.2	82.7	82.6	82.5

Notes:  
 U - Not present at or above the associated reporting limit.  
 J - Estimated concentration.  
 UJ - Estimated reporting limit.  
 R - Rejected.  
 (P) - Preliminary sample results

**TABLE 2.1**  
**DELINEATION SAMPLE PCBs ANALYTICAL RESULTS SUMMARY**  
**GM CETC BEDFORD FACILITY**  
**BEDFORD, INDIANA**

Area		P039	P039	P039	P039	P039	P039	P039
Sample Location		B-253Ec	B-253Ec	B-253Ed	B-253Ed	B-253Ed	B-253Ed	B-253F
Sample Identification		S-039-110910-JL-1722	S-039-110910-JL-1723	S-039-110910-JL-1726	S-039-110910-JL-1727	S-039-110910-JL-1728	S-039-110910-JL-1729	S-039-102010-JL-1169
Sample Date		11/9/2010	11/9/2010	11/9/2010	11/9/2010	11/9/2010	11/9/2010	10/20/2010
Sample Type								
Sample Depth		(3-3.5) ft	(3.5-4) ft	(3-3.5) ft	(3.5-4) ft	(4-4.5) ft	(4.5-5) ft	(3.5-4) ft
Liner Depths		(0-0.5) ft below liner	(0.5-1) ft below liner	(0-0.5) ft below liner	(0.5-1) ft below liner	(1-1.5) ft below liner	(1.5-2) ft below liner	(0-0.5) ft below liner
	<b>Units</b>							
<b>PCBs</b>								
Aroclor-1016 (PCB-1016)	mg/kg	0.04 U	0.04 U	0.039 U	4.4 U	0.41 U	0.041 U	0.4 U
Aroclor-1221 (PCB-1221)	mg/kg	0.04 U	0.04 U	0.039 U	4.4 U	0.41 U	0.041 U	0.4 U
Aroclor-1232 (PCB-1232)	mg/kg	0.04 U	0.04 U	0.039 U	4.4 U	0.41 U	0.041 U	0.4 U
Aroclor-1242 (PCB-1242)	mg/kg	0.04 U	0.04 U	0.039 U	17	5.2	0.041 U	5.5
Aroclor-1248 (PCB-1248)	mg/kg	0.04 U	0.04 U	0.039 U	4.4 U	0.41 U	0.14	0.4 U
Aroclor-1254 (PCB-1254)	mg/kg	0.04 U	0.04 U	0.039 U	7	2.4	0.041 U	1.9
Aroclor-1260 (PCB-1260)	mg/kg	0.04 U	0.04 U	0.039 U	4.4 U	0.41 U	0.041 U	0.4 U
Total PCBs	mg/kg	ND	ND	ND	24	7.6	0.14	7.4
<b>General Chemistry</b>								
Total solids	%	82.0	82.9	84.6	74.3	80.4	81.0	81.6

Notes:

- U - Not present at or above the associated reporting limit.
- J - Estimated concentration.
- UJ - Estimated reporting limit.
- R - Rejected.
- <sup>(P)</sup> - Preliminary sample results

**TABLE 2.1**  
**DELINEATION SAMPLE PCBs ANALYTICAL RESULTS SUMMARY**  
**GM CETC BEDFORD FACILITY**  
**BEDFORD, INDIANA**

Area		P039	P039	P039	P039	P039	P039	P039
Sample Location		B-253F	B-253F	B-253G	B-253G	B-253G	B-253G	B-253G
Sample Identification		S-039-102010-JL-1170	S-039-102010-JL-1171	S-039-101510-JL-0636	S-039-101510-JL-0652	S-039-101510-JL-0637	S-039-101510-JL-0653	S-039-101510-JL-0638
Sample Date		10/20/2010	10/20/2010	10/15/2010	10/15/2010	10/15/2010	10/15/2010	10/15/2010
Sample Type					Duplicate		Duplicate	
Sample Depth		(4-4.5) ft	(4.5-5) ft	(3.5-4) ft	(3.5-4) ft	(4-4.5) ft	(4-4.5) ft	(4.5-5) ft
Liner Depths		(0.5-1) ft below liner	(1-1.5) ft below liner	(0-0.5) ft below liner	(0-0.5) ft below liner	(0.5-1) ft below liner	(0.5-1) ft below liner	(1-1.5) ft below liner
	<b>Units</b>							
<b>PCBs</b>								
Aroclor-1016 (PCB-1016)	mg/kg	0.041 U	0.042 U	0.41 U	0.21 U	0.041 U	0.042 U	0.041 U
Aroclor-1221 (PCB-1221)	mg/kg	0.041 U	0.042 U	0.41 U	0.21 U	0.041 U	0.042 U	0.041 U
Aroclor-1232 (PCB-1232)	mg/kg	0.041 U	0.042 U	0.41 U	0.21 U	0.041 U	0.042 U	0.041 U
Aroclor-1242 (PCB-1242)	mg/kg	0.041 U	0.042 U	0.41 U	0.21 U	0.041 U	0.042 U	0.041 U
Aroclor-1248 (PCB-1248)	mg/kg	0.064	0.046	2.9	1	0.041 U	0.042 U	0.18
Aroclor-1254 (PCB-1254)	mg/kg	0.041 U	0.042 U	0.41 U	0.21 U	0.041 U	0.43	0.041 U
Aroclor-1260 (PCB-1260)	mg/kg	0.041 U	0.042 U	0.41 U	0.18 J	0.041 U	0.042 U	0.041 U
Total PCBs	mg/kg	0.064	0.046	2.9	1.18 J	ND	0.43	0.18
<b>General Chemistry</b>								
Total solids	%	80.0	79.1	80.2	80.0	79.6	78.0	80.7

Notes:

U - Not present at or above the associated reporting limit.

J - Estimated concentration.

UJ - Estimated reporting limit.

R - Rejected.

<sup>(P)</sup> - Preliminary sample results

**TABLE 2.1**  
**DELINEATION SAMPLE PCBs ANALYTICAL RESULTS SUMMARY**  
**GM CETC BEDFORD FACILITY**  
**BEDFORD, INDIANA**

Area		P039	P039	P039	P039	P039	P039	P039
Sample Location		B-253G	B-253H	B-253H	B-253H	B-254A	B-254A	B-254A
Sample Identification		S-039-101510-JL-0654	S-039-102010-JL-1137	S-039-102010-JL-1138	S-039-102010-JL-1139	S-039-101410-JL-0590	S-039-101410-JL-0591	S-039-101410-JL-0592
Sample Date		10/15/2010	10/20/2010	10/20/2010	10/20/2010	10/14/2010	10/14/2010	10/14/2010
Sample Type		Duplicate						
Sample Depth		(4.5-5) ft	(2.5-3) ft	(3-3.5) ft	(3.5-4) ft	(2.5-3) ft	(3-3.5) ft	(3.5-4) ft
Liner Depths		(1-1.5) ft below liner	(0-0.5) ft below liner	(0.5-1) ft below liner	(1-1.5) ft below liner	(0-0.5) ft above liner	(0-0.5) ft below liner	(0.5-1) ft below liner
	<b>Units</b>							
<b>PCBs</b>								
Aroclor-1016 (PCB-1016)	mg/kg	0.041 U	0.4 U	0.4 U	0.04 U	0.043 U	0.23 U	0.04 U
Aroclor-1221 (PCB-1221)	mg/kg	0.041 U	0.4 U	0.4 U	0.04 U	0.043 U	0.23 U	0.04 U
Aroclor-1232 (PCB-1232)	mg/kg	0.041 U	0.4 U	0.4 U	0.04 U	0.043 U	0.23 U	0.04 U
Aroclor-1242 (PCB-1242)	mg/kg	0.041 U	0.4 U	0.4 U	0.04 U	0.043 U	0.23 U	0.04 U
Aroclor-1248 (PCB-1248)	mg/kg	0.061	6.4	2.2 J	0.29	0.043 U	4	0.13
Aroclor-1254 (PCB-1254)	mg/kg	0.041 U	0.4 U	0.4 U	0.04 U	0.043 U	0.23 U	0.04 U
Aroclor-1260 (PCB-1260)	mg/kg	0.041 U	0.63	0.21 J	0.037 J	0.043 U	0.4	0.04 U
Total PCBs	mg/kg	0.061	7.03	2.41 J	0.327 J	ND	4.4	0.13
<b>General Chemistry</b>								
Total solids	%	80.4	81.7	82.6	82.9	75.9	70.9	82.6

Notes:

U - Not present at or above the associated

J - Estimated concentration.

UJ - Estimated reporting limit.

R - Rejected.

<sup>(P)</sup> - Preliminary sample results

**TABLE 2.1**  
**DELINEATION SAMPLE PCBs ANALYTICAL RESULTS SUMMARY**  
**GM CETC BEDFORD FACILITY**  
**BEDFORD, INDIANA**

Area		P039	P039	P039	P039	P039	P039	P039
Sample Location		B-254B	B-254B	B-254C	B-254C	B-254D	B-254D	B-254D
Sample Identification		S-039-101410-JL-0608	S-039-101410-JL-0610	S-039-101410-JL-0620	S-039-101410-JL-0621	S-039-102010-JL-1057	S-039-102010-JL-1058	S-039-102010-JL-1059
Sample Date		10/14/2010	10/14/2010	10/14/2010	10/14/2010	10/20/2010	10/20/2010	10/20/2010
Sample Type								
Sample Depth		(4-4.5) ft	(5-5.5) ft	(3.5-4) ft	(4-4.5) ft	(3-3.5) ft	(3.5-4) ft	(4-4.5) ft
Liner Depths		(0-0.5) ft below liner	(1-1.5) ft below liner	(0-0.5) ft below liner	(0.5-1) ft below liner	(0-0.5) ft below liner	(0.5-1) ft below liner	(1-1.5) ft below liner
	<b>Units</b>							
<b>PCBs</b>								
Aroclor-1016 (PCB-1016)	mg/kg	0.04 U	0.042 U	0.2 U	0.041 U	0.41 U	0.041 U	0.041 U
Aroclor-1221 (PCB-1221)	mg/kg	0.04 U	0.042 U	0.2 U	0.041 U	0.41 U	0.041 U	0.041 U
Aroclor-1232 (PCB-1232)	mg/kg	0.04 U	0.042 U	0.2 U	0.041 U	0.41 U	0.041 U	0.041 U
Aroclor-1242 (PCB-1242)	mg/kg	0.04 U	0.042 U	0.2 U	0.041 U	0.41 U	0.041 U	0.041 U
Aroclor-1248 (PCB-1248)	mg/kg	0.12	0.042 U	1.2	0.041 U	0.41 U	0.041 U	0.041 U
Aroclor-1254 (PCB-1254)	mg/kg	0.04 U	0.042 U	0.2 U	0.13	0.91	0.16	0.041 U
Aroclor-1260 (PCB-1260)	mg/kg	0.04 U	0.042 U	0.23	0.041 U	0.41 U	0.041 U	0.041 U
Total PCBs	mg/kg	0.12	ND	1.43	0.13	0.91	0.16	ND
<b>General Chemistry</b>								
Total solids	%	83.3	78.1	81.1	80.7	81.1	81.4	80.5

Notes:

U - Not present at or above the associated

J - Estimated concentration.

UJ - Estimated reporting limit.

R - Rejected.

<sup>(P)</sup> - Preliminary sample results

**TABLE 2.1**  
**DELINEATION SAMPLE PCBs ANALYTICAL RESULTS SUMMARY**  
**GM CETC BEDFORD FACILITY**  
**BEDFORD, INDIANA**

Area		P039	P039	P039	P039	P039	P039	P039
Sample Location		B-254E	B-254E	B-254E	B-254F	B-254F	B-254F	B-254F
Sample Identification		S-039-101410-JL-0518	S-039-101410-JL-0519	S-039-101410-JL-0520	S-039-101310-JL-0499	S-039-101310-JL-0500	S-039-101310-JL-0501	S-039-101310-JL-0502
Sample Date		10/14/2010	10/14/2010	10/14/2010	10/13/2010	10/13/2010	10/13/2010	10/13/2010
Sample Type								
Sample Depth		(4-4.5) ft	(4.5-5) ft	(5-5.5) ft	(2.5-3) ft	(3-3.5) ft	(3.5-4) ft	(4-4.5) ft
Liner Depths		(0-0.5) ft below liner	(0.5-1) ft below liner	(1-1.5) ft below liner	(0.5-1) ft above liner	(0-0.5) ft above liner	(0-0.5) ft below liner	(0.5-1) ft below liner
	Units							
<b>PCBs</b>								
Aroclor-1016 (PCB-1016)	mg/kg	0.042 U	0.21 U	0.21 U	0.041 U	0.46 U	0.082 U	0.042 U
Aroclor-1221 (PCB-1221)	mg/kg	0.042 U	0.21 U	0.21 U	0.041 U	0.46 U	0.082 U	0.042 U
Aroclor-1232 (PCB-1232)	mg/kg	0.042 U	0.21 U	0.21 U	0.041 U	0.46 U	0.082 U	0.042 U
Aroclor-1242 (PCB-1242)	mg/kg	0.042 U	0.21 U	0.21 U	0.041 U	0.46 U	0.082 U	0.042 U
Aroclor-1248 (PCB-1248)	mg/kg	0.042 U	2	0.68	0.041 U	2.1	0.3	0.04 J
Aroclor-1254 (PCB-1254)	mg/kg	0.042 U	0.21 U	0.21 U	0.041 U	0.46 U	0.082 U	0.042 U
Aroclor-1260 (PCB-1260)	mg/kg	0.042 U	0.3	0.21 U	0.041	0.27 J	0.056 J	0.042 U
Total PCBs	mg/kg	ND	2.3	0.68	0.041	2.37 J	0.356 J	0.04 J
<b>General Chemistry</b>								
Total solids	%	78.9	79.3	77.9	80.0	71.9	80.4	79.5

Notes:

- U - Not present at or above the associated reporting limit.
- J - Estimated concentration.
- UJ - Estimated reporting limit.
- R - Rejected.
- <sup>(P)</sup> - Preliminary sample results

**TABLE 2.1**  
**DELINEATION SAMPLE PCBs ANALYTICAL RESULTS SUMMARY**  
**GM CETC BEDFORD FACILITY**  
**BEDFORD, INDIANA**

Area		P039	P039	P039	P039	P039	P039	P039
Sample Location		B-254G	B-254G	B-254G	B-254H	B-254H	B-255A	B-255B
Sample Identification		S-039-101310-JL-0484	S-039-101310-JL-0485	S-039-101310-JL-0486	S-039-101310-JL-0452	S-039-101310-JL-0469	S-039-101110-JL-0214	S-039-101110-JL-0231
Sample Date		10/13/2010	10/13/2010	10/13/2010	10/13/2010	10/13/2010	10/11/2010	10/11/2010
Sample Type						Duplicate		
Sample Depth		(3-3.5) ft	(3.5-4) ft	(4-4.5) ft	(4-4.5) ft	(4-4.5) ft	(4-4.5) ft	(4-4.5) ft
Liner Depths		(0-0.5) ft below liner	(0.5-1) ft below liner	(1-1.5) ft below liner	(0-0.5) ft below liner	(0-0.5) ft below liner	(0-0.5) ft below liner	(0-0.5) ft below liner
	Units							
<b>PCBs</b>								
Aroclor-1016 (PCB-1016)	mg/kg	0.45 U	0.041 U	0.085 U	0.21 U	0.21 U	0.039 U	0.041 U
Aroclor-1221 (PCB-1221)	mg/kg	0.45 U	0.041 U	0.085 U	0.21 U	0.21 U	0.039 U	0.041 U
Aroclor-1232 (PCB-1232)	mg/kg	0.45 U	0.041 U	0.085 U	0.21 U	0.21 U	0.039 U	0.041 U
Aroclor-1242 (PCB-1242)	mg/kg	0.45 U	0.041 U	0.085 U	0.21 U	0.21 U	0.039 U	0.041 U
Aroclor-1248 (PCB-1248)	mg/kg	2.2	0.41	0.71	0.64	1.2	0.039 U	0.041 U
Aroclor-1254 (PCB-1254)	mg/kg	0.45 U	0.041 U	0.085 U	0.21 U	0.21 U	0.039 U	0.041 U
Aroclor-1260 (PCB-1260)	mg/kg	0.31 J	0.052	0.099	0.21 U	0.13 J	0.039 U	0.041 U
Total PCBs	mg/kg	2.51 J	0.462	0.809	0.64	1.33 J	ND	ND
<b>General Chemistry</b>								
Total solids	%	73.7	80.3	77.4	79.3	79.7	83.9	81.0

Notes:

U - Not present at or above the associated

J - Estimated concentration.

UJ - Estimated reporting limit.

R - Rejected.

<sup>(P)</sup> - Preliminary sample results

**TABLE 2.1**  
**DELINEATION SAMPLE PCBs ANALYTICAL RESULTS SUMMARY**  
**GM CETC BEDFORD FACILITY**  
**BEDFORD, INDIANA**

Area		P039	P039	P039	P039	P039	P039	P039
Sample Location		B-255C	B-255C	B-255D	B-255E	B-255F	B-255G	B-255H
Sample Identification		S-039-101110-JL-0248	S-039-101110-JL-0249	S-039-101210-JL-0265	S-039-101110-JL-0163	S-039-102510-JL-1447	S-039-101110-JL-0149	S-039-100810-JL-0133
Sample Date		10/11/2010	10/11/2010	10/12/2010	10/11/2010	10/25/2010	10/11/2010	10/8/2010
Sample Type								
Sample Depth		(4-4.5) ft	(4.5-5) ft	(4-4.5) ft	(2.5-3) ft	(6.5-7) ft	(3.5-4) ft	(4-4.5) ft
Liner Depths		(0-0.5) ft below liner	(0.5-1) ft below liner	(0-0.5) ft below liner	(0-0.5) ft below liner	(0-0.5) ft below liner	(0-0.5) ft below liner	(0-0.5) ft below liner
	Units							
<b>PCBs</b>								
Aroclor-1016 (PCB-1016)	mg/kg	0.044 U	0.042 U	0.2 U	0.042 U	0.041 U	0.042 U	0.044 U
Aroclor-1221 (PCB-1221)	mg/kg	0.044 U	0.042 U	0.2 U	0.042 U	0.041 U	0.042 U	0.044 U
Aroclor-1232 (PCB-1232)	mg/kg	0.044 U	0.042 U	0.2 U	0.042 U	0.041 U	0.042 U	0.044 U
Aroclor-1242 (PCB-1242)	mg/kg	0.044 U	0.042 U	0.2 U	0.042 U	0.041 U	0.042 U	0.044 U
Aroclor-1248 (PCB-1248)	mg/kg	0.044 U	0.34	0.92	0.042 U	0.041 U	0.042 U	0.044 U
Aroclor-1254 (PCB-1254)	mg/kg	0.044 U	0.042 U	0.2 U	0.042 U	0.041 U	0.042 U	0.044 U
Aroclor-1260 (PCB-1260)	mg/kg	0.044 U	0.067	0.11 J	0.042 U	0.041 U	0.042 U	0.044 U
Total PCBs	mg/kg	ND	0.407	1.03 J	ND	ND	ND	ND
<b>General Chemistry</b>								
Total solids	%	75.5	77.8	80.7	79.0	80.3	78.8	75.8

Notes:

U - Not present at or above the associated

J - Estimated concentration.

UJ - Estimated reporting limit.

R - Rejected.

<sup>(P)</sup> - Preliminary sample results

**TABLE 2.1**  
**DELINEATION SAMPLE PCBs ANALYTICAL RESULTS SUMMARY**  
**GM CETC BEDFORD FACILITY**  
**BEDFORD, INDIANA**

Area		P039	P039	P039	P039	P039	P039	P039
Sample Location		B-262A	B-262A	B-262A	B-262B	B-262B	B-262B	B-262B
Sample Identification		S-039-102010-JL-1122	S-039-102010-JL-1123	S-039-102010-JL-1124	S-039-101810-JL-0794	S-039-101810-JL-0795	S-039-101810-JL-0796	S-039-101810-JL-0798
Sample Date		10/20/2010	10/20/2010	10/20/2010	10/18/2010	10/18/2010	10/18/2010	10/18/2010
Sample Type								
Sample Depth		(5-5.5) ft	(5.5-6) ft	(6-6.5) ft	(0-0.5) ft	(0.5-1) ft	(1-1.5) ft	(2-2.5) ft
Liner Depths		(0-0.5) ft below liner	(0.5-1) ft below liner	(1-1.5) ft below liner	(0-0.5) ft below liner	(0.5-1) ft below liner	(1-1.5) ft below liner	(2-2.5) ft below liner
	Units							
<b>PCBs</b>								
Aroclor-1016 (PCB-1016)	mg/kg	0.4 U	0.04 U	0.04 U	0.37 U	0.04 U	0.041 U	0.043 U
Aroclor-1221 (PCB-1221)	mg/kg	0.4 U	0.04 U	0.04 U	0.37 U	0.04 U	0.041 U	0.043 U
Aroclor-1232 (PCB-1232)	mg/kg	0.4 U	0.04 U	0.04 U	0.37 U	0.04 U	0.041 U	0.043 U
Aroclor-1242 (PCB-1242)	mg/kg	0.4 U	0.04 U	0.04 U	0.37 U	0.04 U	0.041 U	0.043 U
Aroclor-1248 (PCB-1248)	mg/kg	4.7	0.14	0.049	4.6	0.04 U	0.041 U	0.043 U
Aroclor-1254 (PCB-1254)	mg/kg	0.4 U	0.04 U	0.04 U	0.37 U	0.04 U	0.041 U	0.043 U
Aroclor-1260 (PCB-1260)	mg/kg	0.69	0.035 J	0.04 U	0.72	0.04 U	0.041 U	0.043 U
Total PCBs	mg/kg	5.39	0.175 J	0.049	5.32	ND	ND	ND
<b>General Chemistry</b>								
Total solids	%	83.2	82.2	83.5	89.3	81.7	79.8	76.9

Notes:

- U - Not present at or above the associated reporting limit.
- J - Estimated concentration.
- UJ - Estimated reporting limit.
- R - Rejected.
- <sup>(P)</sup> - Preliminary sample results

**TABLE 2.1**  
**DELINEATION SAMPLE PCBs ANALYTICAL RESULTS SUMMARY**  
**GM CETC BEDFORD FACILITY**  
**BEDFORD, INDIANA**

Area		P039	P039	P039	P039	P039	P039	P039
Sample Location		B-262Ca	B-262Ca	B-262Ca	B-262Ca	B-262Ca	B-262Ca	B-262Cb
Sample Identification		S-039-101910-JL-0940	S-039-101910-JL-0941	S-039-101910-JL-0942	S-039-101910-JL-0943	S-039-101910-JL-0944	S-039-101910-JL-0947	S-039-101810-JL-0771
Sample Date		10/19/2010	10/19/2010	10/19/2010	10/19/2010	10/19/2010	10/19/2010	10/18/2010
Sample Type								
Sample Depth		(3-3.5) ft	(3.5-4) ft	(4-4.5) ft	(4.5-5) ft	(5-5.5) ft	(6.5-7) ft	(0.5-1) ft
Liner Depths		(1-1.5) ft above liner	(0.5-1) ft above liner	(0-0.5) ft above liner	(0-0.5) ft below liner	(0.5-1) ft below liner	(2-2.5) ft below liner	(0.5-1) ft below liner
	<b>Units</b>							
<b>PCBs</b>								
Aroclor-1016 (PCB-1016)	mg/kg	0.04 U	0.041 U	4.1 U	4.1 U	0.04 U	0.041 U	0.04 U
Aroclor-1221 (PCB-1221)	mg/kg	0.04 U	0.041 U	4.1 U	4.1 U	0.04 U	0.041 U	0.04 U
Aroclor-1232 (PCB-1232)	mg/kg	0.04 U	0.041 U	4.1 U	4.1 U	0.04 U	0.041 U	0.04 U
Aroclor-1242 (PCB-1242)	mg/kg	0.04 U	0.041 U	4.1 U	4.1 U	0.04 U	0.041 U	0.04 U
Aroclor-1248 (PCB-1248)	mg/kg	0.04 U	0.041 U	35	23	0.6	0.55	0.04 U
Aroclor-1254 (PCB-1254)	mg/kg	0.04 U	0.041 U	4.1 U	4.1 U	0.04 U	0.041 U	0.04 U
Aroclor-1260 (PCB-1260)	mg/kg	0.04 U	0.041 U	4.1 U	3.2 J	0.15	0.04 J	0.04 U
Total PCBs	mg/kg	ND	ND	35	26.2 J	0.75	0.59 J	ND
<b>General Chemistry</b>								
Total solids	%	82.1	79.9	80.5	80.5	82.2	80.5	82.2

Notes:

- U - Not present at or above the associated reporting limit.
- J - Estimated concentration.
- UJ - Estimated reporting limit.
- R - Rejected.
- <sup>(P)</sup> - Preliminary sample results

**TABLE 2.1**  
**DELINEATION SAMPLE PCBs ANALYTICAL RESULTS SUMMARY**  
**GM CETC BEDFORD FACILITY**  
**BEDFORD, INDIANA**

Area		P039	P039	P039	P039	P039	P039	P039
Sample Location		B-262Cb	B-262Cb	B-262Cb	B-262D	B-262D	B-262D	B-262D
Sample Identification		S-039-101810-JL-0783	S-039-101810-JL-0774	S-039-101810-JL-0786	S-039-101810-JL-0758	S-039-101810-JL-0759	S-039-101810-JL-0760	S-039-101810-JL-0762
Sample Date		10/18/2010	10/18/2010	10/18/2010	10/18/2010	10/18/2010	10/18/2010	10/18/2010
Sample Type		Duplicate		Duplicate				
Sample Depth		(0.5-1) ft	(2-2.5) ft	(2-2.5) ft	(0-0.5) ft	(0.5-1) ft	(1-1.5) ft	(2-2.5) ft
Liner Depths		(0.5-1) ft below liner	(2-2.5) ft below liner	(2-2.5) ft below liner	(0-0.5) ft below liner	(0.5-1) ft below liner	(1-1.5) ft below liner	(2-2.5) ft below liner
	<b>Units</b>							
<b>PCBs</b>								
Aroclor-1016 (PCB-1016)	mg/kg	0.04 U	0.043 U	0.043 U	0.042 U	0.044 U	0.044 U	0.044 U
Aroclor-1221 (PCB-1221)	mg/kg	0.04 U	0.043 U	0.043 U	0.042 U	0.044 U	0.044 U	0.044 U
Aroclor-1232 (PCB-1232)	mg/kg	0.04 U	0.043 U	0.043 U	0.042 U	0.044 U	0.044 U	0.044 U
Aroclor-1242 (PCB-1242)	mg/kg	0.04 U	0.043 U	0.043 U	0.042 U	0.044 U	0.044 U	0.044 U
Aroclor-1248 (PCB-1248)	mg/kg	0.04 U	0.043 U	0.022 J	0.042 U	0.044 U	0.044 U	0.044 U
Aroclor-1254 (PCB-1254)	mg/kg	0.04 U	0.043 U	0.043 U	0.042 U	0.044 U	0.044 U	0.044 U
Aroclor-1260 (PCB-1260)	mg/kg	0.04 U	0.043 U	0.043 U	0.042 U	0.044 U	0.044 U	0.044 U
Total PCBs	mg/kg	ND	ND	0.022 J	ND	ND	ND	ND
<b>General Chemistry</b>								
Total solids	%	82.0	76.8	77.0	79.2	75.3	74.4	74.5

Notes:

U - Not present at or above the associated reporting limit.

J - Estimated concentration.

UJ - Estimated reporting limit.

R - Rejected.

<sup>(P)</sup> - Preliminary sample results

**TABLE 2.1**  
**DELINEATION SAMPLE PCBs ANALYTICAL RESULTS SUMMARY**  
**GM CETC BEDFORD FACILITY**  
**BEDFORD, INDIANA**

Area		P039	P039	P039	P039	P039	P039	P039
Sample Location		B-262Db	B-262Db	B-262E	B-262E	B-262E	B-262F	B-262F
Sample Identification		S-039-102810-JL-1693	S-039-102810-JL-1694	S-039-102010-JL-1100	S-039-102010-JL-1104	S-039-102010-JL-1105	S-039-102010-JL-1073	S-039-102010-JL-1089
Sample Date		10/28/2010	10/28/2010	10/20/2010	10/20/2010	10/20/2010	10/20/2010	10/20/2010
Sample Type								Duplicate
Sample Depth		(4-4.5) ft	(4.5-5) ft	(1-1.5) ft	(3-3.5) ft	(3.5-4) ft	(3.5-4) ft	(3.5-4) ft
Liner Depths		(0-0.5) ft below liner	(0.5-1) ft below liner	(1-1.5) ft above liner	(0.5-1) ft below liner	(1-1.5) ft below liner	(0.5-1) ft below liner	(0.5-1) ft below liner
	<b>Units</b>							
<b>PCBs</b>								
Aroclor-1016 (PCB-1016)	mg/kg	0.041 U	0.042 U	0.04 U	0.21 U	0.04 U	0.41 U	0.41 U
Aroclor-1221 (PCB-1221)	mg/kg	0.041 U	0.042 U	0.04 U	0.21 U	0.04 U	0.41 U	0.41 U
Aroclor-1232 (PCB-1232)	mg/kg	0.041 U	0.042 U	0.04 U	0.21 U	0.04 U	0.41 U	0.41 U
Aroclor-1242 (PCB-1242)	mg/kg	0.041 U	0.042 U	0.04 U	0.21 U	0.04 U	0.41 U	0.41 U
Aroclor-1248 (PCB-1248)	mg/kg	0.041 U	0.042 U	0.04 U	2.6	0.086	2.1	1.7
Aroclor-1254 (PCB-1254)	mg/kg	0.041 U	0.042 U	0.04 U	0.21 U	0.04 U	0.41 U	0.41 U
Aroclor-1260 (PCB-1260)	mg/kg	0.041 U	0.042 U	0.04 U	0.32	0.04 U	0.55	0.4 J
Total PCBs	mg/kg	ND	ND	ND	2.92	0.086	2.65	2.1 J
<b>General Chemistry</b>								
Total solids	%	80.1	78.4	81.7	80.1	82.9	81.1	80.9

Notes:

- U - Not present at or above the associated reporting limit.
- J - Estimated concentration.
- UJ - Estimated reporting limit.
- R - Rejected.
- <sup>(P)</sup> - Preliminary sample results

**TABLE 2.1**  
**DELINEATION SAMPLE PCBs ANALYTICAL RESULTS SUMMARY**  
**GM CETC BEDFORD FACILITY**  
**BEDFORD, INDIANA**

Area		P039	P039	P039	P039	P039	P039	P039
Sample Location		B-262F	B-262F	B-262F	B-262F	B-262F	B-262F	B-262G
Sample Identification		S-039-102010-JL-1074	S-039-102010-JL-1090	S-039-102010-JL-1075	S-039-102010-JL-1091	S-039-102010-JL-1076	S-039-102010-JL-1092	S-039-101910-JL-0960
Sample Date		10/20/2010	10/20/2010	10/20/2010	10/20/2010	10/20/2010	10/20/2010	10/19/2010
Sample Type			Duplicate		Duplicate		Duplicate	
Sample Depth		(4-4.5) ft	(4-4.5) ft	(4.5-5) ft	(4.5-5) ft	(5-5.5) ft	(5-5.5) ft	(3-3.5) ft
Liner Depths		(1-1.5) ft below liner	(1-1.5) ft below liner	(1.5-2) ft below liner	(1.5-2) ft below liner	(2-2.5) ft below liner	(2-2.5) ft below liner	(0-0.5) ft below liner
	<b>Units</b>							
<b>PCBs</b>								
Aroclor-1016 (PCB-1016)	mg/kg	0.82 U	0.38 U	0.041 U	0.041 U	0.041 U	0.042 U	2.2 U
Aroclor-1221 (PCB-1221)	mg/kg	0.82 U	0.38 U	0.041 U	0.041 U	0.041 U	0.042 U	2.2 U
Aroclor-1232 (PCB-1232)	mg/kg	0.82 U	0.38 U	0.041 U	0.041 U	0.041 U	0.042 U	2.2 U
Aroclor-1242 (PCB-1242)	mg/kg	0.82 U	0.38 U	0.041 U	0.041 U	0.041 U	0.042 U	2.2 U
Aroclor-1248 (PCB-1248)	mg/kg	4.2	2.5	0.073	0.054	0.041 U	0.042 U	14
Aroclor-1254 (PCB-1254)	mg/kg	0.82 U	0.38 U	0.041 U	0.041 U	0.041 U	0.042 U	2.2 U
Aroclor-1260 (PCB-1260)	mg/kg	0.58 J	0.41	0.041 U	0.041 U	0.041 U	0.042 U	1.6 J
Total PCBs	mg/kg	4.78 J	2.91	0.073	0.054	ND	ND	15.6 J
<b>General Chemistry</b>								
Total solids	%	80.1	85.7	81.3	80.9	79.6	78.9	74.0

Notes:

U - Not present at or above the associated

J - Estimated concentration.

UJ - Estimated reporting limit.

R - Rejected.

<sup>(P)</sup> - Preliminary sample results

**TABLE 2.1**  
**DELINEATION SAMPLE PCBs ANALYTICAL RESULTS SUMMARY**  
**GM CETC BEDFORD FACILITY**  
**BEDFORD, INDIANA**

Area		P039	P039	P039	P039	P039	P039	P039
Sample Location		B-262G	B-262G	B-262H	B-262H	B-262H	B-262H	B-262H
Sample Identification		S-039-101910-JL-0961	S-039-101910-JL-0964	S-039-101910-JL-0974	S-039-101910-JL-0975	S-039-101910-JL-0976	S-039-101910-JL-0977	S-039-101910-JL-0979
Sample Date		10/19/2010	10/19/2010	10/19/2010	10/19/2010	10/19/2010	10/19/2010	10/19/2010
Sample Type								
Sample Depth		(3.5-4) ft	(5-5.5) ft	(2.5-3) ft	(3-3.5) ft	(3.5-4) ft	(4-4.5) ft	(5-5.5) ft
Liner Depths		(0.5-1) ft below liner	(2-2.5) ft below liner	(0-0.5) ft above liner	(0-0.5) ft below liner	(0.5-1) ft below liner	(1-1.5) ft below liner	(2-2.5) ft below liner
	Units							
<b>PCBs</b>								
Aroclor-1016 (PCB-1016)	mg/kg	0.2 U	0.042 U	0.04 U	0.79 U	0.81 U	0.04 U	0.04 U
Aroclor-1221 (PCB-1221)	mg/kg	0.2 U	0.042 U	0.04 U	0.79 U	0.81 U	0.04 U	0.04 U
Aroclor-1232 (PCB-1232)	mg/kg	0.2 U	0.042 U	0.04 U	0.79 U	0.81 U	0.04 U	0.04 U
Aroclor-1242 (PCB-1242)	mg/kg	0.2 U	0.042 U	0.04 U	0.79 U	0.81 U	0.04 U	0.04 U
Aroclor-1248 (PCB-1248)	mg/kg	0.46	0.042 U	0.04 U	11	3.8	0.46	0.04 U
Aroclor-1254 (PCB-1254)	mg/kg	0.2 U	0.042 U	0.04 U	0.79 U	0.81 U	0.04 U	0.04 U
Aroclor-1260 (PCB-1260)	mg/kg	0.2 U	0.042 U	0.04 U	1.5	0.64 J	0.04 U	0.04 U
Total PCBs	mg/kg	0.46	ND	ND	12.5	4.44 J	0.46	ND
<b>General Chemistry</b>								
Total solids	%	82.5	78.7	81.9	83.2	81.1	83.5	81.6

Notes:

- U - Not present at or above the associated reporting limit.
- J - Estimated concentration.
- UJ - Estimated reporting limit.
- R - Rejected.
- <sup>(P)</sup> - Preliminary sample results

**TABLE 2.1**  
**DELINEATION SAMPLE PCBs ANALYTICAL RESULTS SUMMARY**  
**GM CETC BEDFORD FACILITY**  
**BEDFORD, INDIANA**

Area		P039	P039	P039	P039	P039	P039	P039
Sample Location		B-263A	B-263A	B-263A	B-263A	B-263Aa	B-263Aa	B-263Ab
Sample Identification		S-039-102010-JL-1040	S-039-102010-JL-1041	S-039-102010-JL-1042	S-039-102010-JL-1043	S-039-111010-JL-1770	S-039-111010-JL-1771	S-039-111010-JL-1778
Sample Date		10/20/2010	10/20/2010	10/20/2010	10/20/2010	11/10/2010	11/10/2010	11/10/2010
Sample Type								
Sample Depth		(2.5-3) ft	(3-3.5) ft	(3.5-4) ft	(4-4.5) ft	(2.5-3) ft	(3-3.5) ft	(2.5-3) ft
Liner Depths		(0-0.5) ft below liner	(0.5-1) ft below liner	(1-1.5) ft below liner	(1.5-2) ft below liner	(0-0.5) ft below liner	(0.5-1) ft below liner	(0-0.5) ft below liner
	<b>Units</b>							
<b>PCBs</b>								
Aroclor-1016 (PCB-1016)	mg/kg	41 U	0.2 U	0.42 U	0.042 U	0.039 U	0.041 U	0.039 U
Aroclor-1221 (PCB-1221)	mg/kg	41 U	0.2 U	0.42 U	0.042 U	0.039 U	0.041 U	0.039 U
Aroclor-1232 (PCB-1232)	mg/kg	41 U	0.2 U	0.42 U	0.042 U	0.039 U	0.041 U	0.039 U
Aroclor-1242 (PCB-1242)	mg/kg	41 U	0.2 U	0.42 U	0.042 U	0.039 U	0.041 U	0.039 U
Aroclor-1248 (PCB-1248)	mg/kg	52	0.95	2.5	0.042 U	0.023 J	0.063	0.039 U
Aroclor-1254 (PCB-1254)	mg/kg	41 U	0.2 U	0.42 U	0.042 U	0.039 U	0.041 U	0.039 U
Aroclor-1260 (PCB-1260)	mg/kg	41 U	0.14 J	0.3 J	0.042 U	0.039 U	0.041 U	0.039 U
Total PCBs	mg/kg	52	1.09 J	2.8 J	ND	0.023 J	0.063	ND
<b>General Chemistry</b>								
Total solids	%	81.0	82.1	78.3	79.3	84.3	80.3	84.3

Notes:

U - Not present at or above the associated reporting limit.

J - Estimated concentration.

UJ - Estimated reporting limit.

R - Rejected.

<sup>(P)</sup> - Preliminary sample results

**TABLE 2.1**  
**DELINEATION SAMPLE PCBs ANALYTICAL RESULTS SUMMARY**  
**GM CETC BEDFORD FACILITY**  
**BEDFORD, INDIANA**

Area		P039	P039	P039	P039	P039	P039	P039
Sample Location		B-263Ab	B-263Ab	B-263Ac	B-263Ac	B-263Ac	B-263Ac	B-263Ac
Sample Identification		S-039-111010-JL-1779	S-039-111010-JL-1781	S-039-110910-JL-1754	S-039-110910-JL-1758	S-039-110910-JL-1755	S-039-110910-JL-1759	S-039-110910-JL-1757
Sample Date		11/10/2010	11/10/2010	11/9/2010	11/9/2010	11/9/2010	11/9/2010	11/9/2010
Sample Type					Duplicate		Duplicate	
Sample Depth		(3-3.5) ft	(4-4.5) ft	(2.5-3) ft	(2.5-3) ft	(3-3.5) ft	(3-3.5) ft	(4-4.5) ft
Liner Depths		(0.5-1) ft below liner	(1.5-2) ft below liner	(0-0.5) ft below liner	(0-0.5) ft below liner	(0.5-1) ft below liner	(0.5-1) ft below liner	(1.5-2) ft below liner
	<b>Units</b>							
<b>PCBs</b>								
Aroclor-1016 (PCB-1016)	mg/kg	2 U	0.04 U	0.04 U	0.04 U	2.2 U	0.82 U	0.41 U
Aroclor-1221 (PCB-1221)	mg/kg	2 U	0.04 U	0.04 U	0.04 U	2.2 U	0.82 U	0.41 U
Aroclor-1232 (PCB-1232)	mg/kg	2 U	0.04 U	0.04 U	0.04 U	2.2 U	0.82 U	0.41 U
Aroclor-1242 (PCB-1242)	mg/kg	2 U	0.04 U	0.04 U	0.04 U	2.2 U	0.82 U	0.41 U
Aroclor-1248 (PCB-1248)	mg/kg	11	0.22	0.04 U	0.32	17	8.5	2.1
Aroclor-1254 (PCB-1254)	mg/kg	2 U	0.04 U	0.04 U	0.04 U	2.2 U	0.82 U	0.41 U
Aroclor-1260 (PCB-1260)	mg/kg	1.3 J	0.05	0.04 U	0.024 J	1.1 J	0.75 J	0.57
Total PCBs	mg/kg	12.3 J	0.27	ND	0.344 J	18.1 J	9.25 J	2.67
<b>General Chemistry</b>								
Total solids	%	81.8	82.2	82.5	83.3	76.1	80.2	81.3

Notes:

- U - Not present at or above the associated reporting limit.
- J - Estimated concentration.
- UJ - Estimated reporting limit.
- R - Rejected.
- <sup>(P)</sup> - Preliminary sample results

**TABLE 2.1**  
**DELINEATION SAMPLE PCBs ANALYTICAL RESULTS SUMMARY**  
**GM CETC BEDFORD FACILITY**  
**BEDFORD, INDIANA**

Area		P039	P039	P039	P039	P039	P039
Sample Location		B-263Ac	B-263Ac	B-263Ac	B-263Ad	B-263Ad	B-263Ad
Sample Identification		S-039-110910-JL-1761	S-039-122210-PB-1786	S-039-122210-PB-1787	S-039-110910-JL-1766	S-039-110910-JL-1767	S-039-110910-JL-1769
Sample Date		11/9/2010	12/22/2010	12/22/2010	11/9/2010	11/9/2010	11/9/2010
Sample Type		Duplicate					
Sample Depth		(4-4.5) ft	(2-2.5) ft	(2.5-3) ft	(2.5-3) ft	(3-3.5) ft	(4-4.5) ft
Liner Depths		(1.5-2) ft below liner	(2-2.5) ft below liner	(2.5-3) ft below liner	(0-0.5) ft below liner	(0.5-1) ft below liner	(1.5-2) ft below liner
	<i>Units</i>						
<b>PCBs</b>							
Aroclor-1016 (PCB-1016)	mg/kg	0.08 U	0.043 U	0.043 U	0.041 U	2.1 U	0.21 U
Aroclor-1221 (PCB-1221)	mg/kg	0.08 U	0.043 U	0.043 U	0.041 U	2.1 U	0.21 U
Aroclor-1232 (PCB-1232)	mg/kg	0.08 U	0.043 U	0.043 U	0.041 U	2.1 U	0.21 U
Aroclor-1242 (PCB-1242)	mg/kg	0.08 U	0.043 U	0.043 U	0.041 U	2.1 U	0.21 U
Aroclor-1248 (PCB-1248)	mg/kg	0.5	0.094	0.043 U	0.041 U	15	0.84
Aroclor-1254 (PCB-1254)	mg/kg	0.08 U	0.043 U	0.043 U	0.041 U	2.1 U	0.21 U
Aroclor-1260 (PCB-1260)	mg/kg	0.11	0.043 U	0.043 U	0.041 U	1.8 J	0.13 J
Total PCBs	mg/kg	0.61	0.094	ND	ND	16.8 J	0.97 J
<b>General Chemistry</b>							
Total solids	%	83.0	76.7	77.2	80.8	77.8	80.2

Notes:

U - Not present at or above the associat

J - Estimated concentration.

UJ - Estimated reporting limit.

R - Rejected.

<sup>(P)</sup> - Preliminary sample results

**TABLE 2.1**  
**DELINEATION SAMPLE PCBs ANALYTICAL RESULTS SUMMARY**  
**GM CETC BEDFORD FACILITY**  
**BEDFORD, INDIANA**

Area		P039	P039	P039	P039	P039	P039	P039
Sample Location		B-263B	B-263B	B-263B	B-263C	B-263C	B-263C	B-263B
Sample Identification		S-039-102010-JL-1026	S-039-102010-JL-1027	S-039-102010-JL-1028	S-039-101910-JL-0991	S-039-101910-JL-0992	S-039-101910-JL-0993	S-039-102010-JL-1026
Sample Date		10/20/2010	10/20/2010	10/20/2010	10/19/2010	10/19/2010	10/19/2010	10/20/2010
Sample Type								
Sample Depth		(3-3.5) ft	(3.5-4) ft	(4-4.5) ft	(3-3.5) ft	(3.5-4) ft	(4-4.5) ft	(3-3.5) ft
Liner Depths		(0-0.5) ft below liner	(0.5-1) ft below liner	(1-1.5) ft below liner	(0-0.5) ft below liner	(0.5-1) ft below liner	(1-1.5) ft below liner	(0-0.5) ft below liner
	Units							
<b>PCBs</b>								
Aroclor-1016 (PCB-1016)	mg/kg	0.42 U	0.041 U	0.041 U	0.44 U	0.04 U	0.042 U	0.42 U
Aroclor-1221 (PCB-1221)	mg/kg	0.42 U	0.041 U	0.041 U	0.44 U	0.04 U	0.042 U	0.42 U
Aroclor-1232 (PCB-1232)	mg/kg	0.42 U	0.041 U	0.041 U	0.44 U	0.04 U	0.042 U	0.42 U
Aroclor-1242 (PCB-1242)	mg/kg	0.42 U	0.041 U	0.041 U	0.44 U	0.04 U	0.042 U	0.42 U
Aroclor-1248 (PCB-1248)	mg/kg	6.2	0.041 U	0.041 U	5	0.04 U	0.042 U	6.2
Aroclor-1254 (PCB-1254)	mg/kg	0.42 U	0.63	0.041 U	0.44 U	0.21	0.042 U	0.42 U
Aroclor-1260 (PCB-1260)	mg/kg	0.73	0.041 U	0.041 U	0.61	0.04 U	0.042 U	0.73
Total PCBs	mg/kg	6.93	0.63	ND	5.61	0.21	ND	6.93
<b>General Chemistry</b>								
Total solids	%	78.7	79.8	81.4	75.3	82.9	79.3	78.7

## Notes:

U - Not present at or above the associated value.

J - Estimated concentration.

UJ - Estimated reporting limit.

R - Rejected.

**TABLE 2.1**  
**DELINEATION SAMPLE PCBs ANALYTICAL RESULTS SUMMARY**  
**GM CETC BEDFORD FACILITY**  
**BEDFORD, INDIANA**

Area		P039	P039	P039	P039	P039	P039	P039
Sample Location		B-263B	B-263B	B-263C	B-263C	B-263C	B-263D	B-263D
Sample Identification		S-039-102010-JL-1027	S-039-102010-JL-1028	S-039-101910-JL-0991	S-039-101910-JL-0992	S-039-101910-JL-0993	S-039-102510-JL-1407	S-039-102510-JL-1423
Sample Date		10/20/2010	10/20/2010	10/19/2010	10/19/2010	10/19/2010	10/25/2010	10/25/2010
Sample Type								Duplicate
Sample Depth		(3.5-4) ft	(4-4.5) ft	(3-3.5) ft	(3.5-4) ft	(4-4.5) ft	(2.5-3) ft	(2.5-3) ft
Liner Depths		(0.5-1) ft below liner	(1-1.5) ft below liner	(0-0.5) ft below liner	(0.5-1) ft below liner	(1-1.5) ft below liner	(0-0.5) ft above liner	(0-0.5) ft above liner
	Units							
<b>PCBs</b>								
Aroclor-1016 (PCB-1016)	mg/kg	0.041 U	0.041 U	0.44 U	0.04 U	0.042 U	0.039 U	0.039 U
Aroclor-1221 (PCB-1221)	mg/kg	0.041 U	0.041 U	0.44 U	0.04 U	0.042 U	0.039 U	0.039 U
Aroclor-1232 (PCB-1232)	mg/kg	0.041 U	0.041 U	0.44 U	0.04 U	0.042 U	0.039 U	0.039 U
Aroclor-1242 (PCB-1242)	mg/kg	0.041 U	0.041 U	0.44 U	0.04 U	0.042 U	0.039 U	0.039 U
Aroclor-1248 (PCB-1248)	mg/kg	0.041 U	0.041 U	5	0.04 U	0.042 U	0.039 U	0.039 U
Aroclor-1254 (PCB-1254)	mg/kg	0.63	0.041 U	0.44 U	0.21	0.042 U	0.039 U	0.039 U
Aroclor-1260 (PCB-1260)	mg/kg	0.041 U	0.041 U	0.61	0.04 U	0.042 U	0.039 U	0.039 U
Total PCBs	mg/kg	0.63	ND	5.61	0.21	ND	ND	ND
<b>General Chemistry</b>								
Total solids	%	79.8	81.4	75.3	82.9	79.3	84.2	84.4

Notes:

- U - Not present at or above the associated reporting limit.
- J - Estimated concentration.
- UJ - Estimated reporting limit.
- R - Rejected.

**TABLE 2.1**  
**DELINEATION SAMPLE PCBs ANALYTICAL RESULTS SUMMARY**  
**GM CETC BEDFORD FACILITY**  
**BEDFORD, INDIANA**

Area		P039	P039	P039	P039	P039	P039	P039
Sample Location		B-263D	B-263D	B-263D	B-263D	B-263E	B-263E	B-263E
Sample Identification		S-039-102510-JL-1408	S-039-102510-JL-1424	S-039-102510-JL-1409	S-039-102510-JL-1425	S-039-101310-JL-0434	S-039-101310-JL-0435	S-039-101310-JL-0436
Sample Date		10/25/2010	10/25/2010	10/25/2010	10/25/2010	10/13/2010	10/13/2010	10/13/2010
Sample Type			Duplicate		Duplicate			
Sample Depth		(3-3.5) ft	(3-3.5) ft	(3.5-4) ft	(3.5-4) ft	(2.5-3) ft	(3-3.5) ft	(3.5-4) ft
Liner Depths		(0-0.5) ft below liner	(0-0.5) ft below liner	(0.5-1) ft below liner	(0.5-1) ft below liner	(0-0.5) ft above liner	(0-0.5) ft below liner	(0.5-1) ft below liner
	Units							
<b>PCBs</b>								
Aroclor-1016 (PCB-1016)	mg/kg	0.44 U	0.21 U	0.04 U	0.04 U	0.042 U	0.82 U	0.21 U
Aroclor-1221 (PCB-1221)	mg/kg	0.44 U	0.21 U	0.04 U	0.04 U	0.042 U	0.82 U	0.21 U
Aroclor-1232 (PCB-1232)	mg/kg	0.44 U	0.21 U	0.04 U	0.04 U	0.042 U	0.82 U	0.21 U
Aroclor-1242 (PCB-1242)	mg/kg	0.44 U	0.21 U	0.04 U	0.04 U	0.042 U	0.82 U	0.21 U
Aroclor-1248 (PCB-1248)	mg/kg	3.1	2.7	0.04 U	0.04 U	0.042 U	4.1	0.52
Aroclor-1254 (PCB-1254)	mg/kg	0.44 U	0.21 U	0.064	0.09	0.042 U	0.82 U	0.21 U
Aroclor-1260 (PCB-1260)	mg/kg	0.44 U	0.34	0.04 U	0.04 U	0.042 U	0.55 J	0.21 U
Total PCBs	mg/kg	3.1	3.04	0.064	0.09	ND	4.65 J	0.52
<b>General Chemistry</b>								
Total solids	%	75.0	78.6	82.6	82.2	78.7	80.3	80.1

Notes:

- U - Not present at or above the associated reporting limit.
- J - Estimated concentration.
- UJ - Estimated reporting limit.
- R - Rejected.

**TABLE 2.1**  
**DELINEATION SAMPLE PCBs ANALYTICAL RESULTS SUMMARY**  
**GM CETC BEDFORD FACILITY**  
**BEDFORD, INDIANA**

Area		P039	P039	P039	P039	P039	P039	P039
Sample Location		B-263E	B-263F	B-263F	B-263G	B-263G	B-263G	B-263H
Sample Identification		S-039-101310-JL-0437	S-039-101310-JL-0420	S-039-101310-JL-0421	S-039-101310-JL-0405	S-039-101310-JL-0406	S-039-101310-JL-0407	S-039-101310-JL-0390
Sample Date		10/13/2010	10/13/2010	10/13/2010	10/13/2010	10/13/2010	10/13/2010	10/13/2010
Sample Type								
Sample Depth		(4-4.5) ft	(3-3.5) ft	(3.5-4) ft	(3-3.5) ft	(3.5-4) ft	(4-4.5) ft	(3-3.5) ft
Liner Depths		(1-1.5) ft below liner	(0-0.5) ft below liner	(0.5-1) ft below liner	(0-0.5) ft below liner	(0.5-1) ft below liner	(1-1.5) ft below liner	(0-0.5) ft below liner
	<i>Units</i>							
<b>PCBs</b>								
Aroclor-1016 (PCB-1016)	mg/kg	0.04 U	0.86 U	0.041 U	0.42 U	0.041 U	0.042 U	0.41 U
Aroclor-1221 (PCB-1221)	mg/kg	0.04 U	0.86 U	0.041 U	0.42 U	0.041 U	0.042 U	0.41 U
Aroclor-1232 (PCB-1232)	mg/kg	0.04 U	0.86 U	0.041 U	0.42 U	0.041 U	0.042 U	0.41 U
Aroclor-1242 (PCB-1242)	mg/kg	0.04 U	0.86 U	0.041 U	0.42 U	0.041 U	0.042 U	0.41 U
Aroclor-1248 (PCB-1248)	mg/kg	0.04 U	4.8	0.096	3.7	0.041 U	0.042 U	1.5
Aroclor-1254 (PCB-1254)	mg/kg	0.04 U	0.86 U	0.041 U	0.42 U	0.041 U	0.042 U	0.41 U
Aroclor-1260 (PCB-1260)	mg/kg	0.04 U	0.49 J	0.041 U	0.41 J	0.041 U	0.042 U	0.41 U
Total PCBs	mg/kg	ND	5.29 J	0.096	4.11 J	ND	ND	1.5
<b>General Chemistry</b>								
Total solids	%	82.5	77.1	80.3	78.5	81.3	78.8	80.5

Notes:

- U - Not present at or above the associated reporting limit.
- J - Estimated concentration.
- UJ - Estimated reporting limit.
- R - Rejected.

**TABLE 2.1**  
**DELINEATION SAMPLE PCBs ANALYTICAL RESULTS SUMMARY**  
**GM CETC BEDFORD FACILITY**  
**BEDFORD, INDIANA**

Area		P039	P039	P039	P039	P039	P039	P039
Sample Location		B-263H	B-263H	B-264A	B-264A	B-264B	B-264C	B-264C
Sample Identification		S-039-101310-JL-0391	S-039-101310-JL-0392	S-039-101210-JL-0282	S-039-101210-JL-0299	S-039-101210-JL-0316	S-039-101210-JL-0333	S-039-101210-JL-0334
Sample Date		10/13/2010	10/13/2010	10/12/2010	10/12/2010	10/12/2010	10/12/2010	10/12/2010
Sample Type					Duplicate			
Sample Depth		(3.5-4) ft	(4-4.5) ft	(4-4.5) ft	(4-4.5) ft	(4-4.5) ft	(4-4.5) ft	(4.5-5) ft
Liner Depths		(0.5-1) ft below liner	(1-1.5) ft below liner	(0-0.5) ft below liner	(0-0.5) ft below liner	(0-0.5) ft below liner	(0-0.5) ft above liner	(0-0.5) ft below liner
	Units							
<b>PCBs</b>								
Aroclor-1016 (PCB-1016)	mg/kg	0.041 U	0.041 U	0.042 U	0.041 U	0.042 U	0.04 U	0.041 U
Aroclor-1221 (PCB-1221)	mg/kg	0.041 U	0.041 U	0.042 U	0.041 U	0.042 U	0.04 U	0.041 U
Aroclor-1232 (PCB-1232)	mg/kg	0.041 U	0.041 U	0.042 U	0.041 U	0.042 U	0.04 U	0.041 U
Aroclor-1242 (PCB-1242)	mg/kg	0.041 U	0.041 U	0.042 U	0.041 U	0.042 U	0.04 U	0.041 U
Aroclor-1248 (PCB-1248)	mg/kg	0.045	0.041 U	0.71	0.2	0.2	0.04 U	0.041 U
Aroclor-1254 (PCB-1254)	mg/kg	0.041 U	0.041 U	0.042 U	0.041 U	0.042 U	0.04 U	0.041 U
Aroclor-1260 (PCB-1260)	mg/kg	0.041 U	0.041 U	0.15	0.061	0.05	0.04 U	0.041 U
Total PCBs	mg/kg	0.045	ND	0.86	0.261	0.25	ND	ND
<b>General Chemistry</b>								
Total solids	%	80.9	80.9	77.9	80.7	79.1	82.8	81.1

Notes:

- U - Not present at or above the associated reporting limit.
- J - Estimated concentration.
- UJ - Estimated reporting limit.
- R - Rejected.

**TABLE 2.1**  
**DELINEATION SAMPLE PCBs ANALYTICAL RESULTS SUMMARY**  
**GM CETC BEDFORD FACILITY**  
**BEDFORD, INDIANA**

Area		P039	P039	P039	P039	P039	P039	P039
Sample Location		B-264D	B-264E	B-264E	B-264F	B-264G	B-264G	B-264H
Sample Identification		S-039-101210-JL-0350	S-039-100810-JL-0115	S-039-100810-JL-0116	S-039-100810-JL-0101	S-039-100810-JL-0068	S-039-100810-JL-0085	S-039-100710-JL-0052
Sample Date		10/12/2010	10/8/2010	10/8/2010	10/8/2010	10/8/2010	10/8/2010	10/7/2010
Sample Type							Duplicate	
Sample Depth		(4-4.5) ft	(2-2.5) ft	(2.5-3) ft	(3-3.5) ft	(3.5-4) ft	(3.5-4) ft	(4-4.5) ft
Liner Depths		(0-0.5) ft below liner	(0-0.5) ft above liner	(0-0.5) ft below liner	(0-0.5) ft below liner	(0-0.5) ft below liner	(0-0.5) ft below liner	(0-0.5) ft below liner
	Units							
<b>PCBs</b>								
Aroclor-1016 (PCB-1016)	mg/kg	0.042 U	0.041 U	0.042 U	0.04 U	0.041 U	0.042 U	0.041 U
Aroclor-1221 (PCB-1221)	mg/kg	0.042 U	0.041 U	0.042 U	0.04 U	0.041 U	0.042 U	0.041 U
Aroclor-1232 (PCB-1232)	mg/kg	0.042 U	0.041 U	0.042 U	0.04 U	0.041 U	0.042 U	0.041 U
Aroclor-1242 (PCB-1242)	mg/kg	0.042 U	0.041 U	0.042 U	0.04 U	0.041 U	0.042 U	0.041 U
Aroclor-1248 (PCB-1248)	mg/kg	0.042 U	0.041 U	0.042 U	0.04 U	0.041 U	0.042 U	0.041 U
Aroclor-1254 (PCB-1254)	mg/kg	0.042 U	0.041 U	0.042 U	0.04 U	0.041 U	0.042 U	0.041 U
Aroclor-1260 (PCB-1260)	mg/kg	0.042 U	0.041 U	0.042 U	0.04 U	0.041 U	0.042 U	0.041 U
Total PCBs	mg/kg	ND	ND	ND	ND	ND	ND	ND
<b>General Chemistry</b>								
Total solids	%	79.3	79.6	78.9	81.6	81.1	78.8	79.8

Notes:

- U - Not present at or above the associated reporting limit.
- J - Estimated concentration.
- UJ - Estimated reporting limit.
- R - Rejected.

**TABLE 2.1**  
**DELINEATION SAMPLE PCBs ANALYTICAL RESULTS SUMMARY**  
**GM CETC BEDFORD FACILITY**  
**BEDFORD, INDIANA**

Area		P039	P039	P039	P039	P039	P039	P039
Sample Location		B-269A	B-269A	B-269A	B-269Ab	B-269Ab	B-269B	B-269B
Sample Identification		S-039-101810-JL-0746	S-039-101810-JL-0747	S-039-101810-JL-0750	S-039-102810-JL-1705	S-039-102810-JL-1706	S-039-101810-JL-0738	S-039-101810-JL-0740
Sample Date		10/18/2010	10/18/2010	10/18/2010	10/28/2010	10/28/2010	10/18/2010	10/18/2010
Sample Type								
Sample Depth		(0-0.5) ft	(0.5-1) ft	(2-2.5) ft	(0-0.5) ft	(0.5-1) ft	(0-0.5) ft	(1-1.5) ft
Liner Depths		(0-0.5) ft below liner	(0.5-1) ft below liner	(2-2.5) ft below liner	(0-0.5) ft below liner	(0.5-1) ft below liner	(0-0.5) ft below liner	(1-1.5) ft below liner
	<b>Units</b>							
<b>PCBs</b>								
Aroclor-1016 (PCB-1016)	mg/kg	0.093 U	0.037 U	0.045 U	0.041 U	0.041 U	0.041 U	0.044 U
Aroclor-1221 (PCB-1221)	mg/kg	0.093 U	0.037 U	0.045 U	0.041 U	0.041 U	0.041 U	0.044 U
Aroclor-1232 (PCB-1232)	mg/kg	0.093 U	0.037 U	0.045 U	0.041 U	0.041 U	0.041 U	0.044 U
Aroclor-1242 (PCB-1242)	mg/kg	0.093 U	0.037 U	0.045 U	0.041 U	0.041 U	0.041 U	0.044 U
Aroclor-1248 (PCB-1248)	mg/kg	0.026 J	0.066	0.045 U	0.041 U	0.041 U	0.041 U	0.044 U
Aroclor-1254 (PCB-1254)	mg/kg	0.093 U	0.037 U	0.045 U	0.041 U	0.041 U	0.041 U	0.044 U
Aroclor-1260 (PCB-1260)	mg/kg	0.093 U	0.037 U	0.045 U	0.041 U	0.041 U	0.041 U	0.044 U
Total PCBs	mg/kg	0.026 J	0.066	ND	ND	ND	ND	ND
<b>General Chemistry</b>								
Total solids	%	88.4	89.0	74.1	80.9	81.1	80.0	74.8

Notes:

- U - Not present at or above the associated reporting limit.
- J - Estimated concentration.
- UJ - Estimated reporting limit.
- R - Rejected.

**TABLE 2.1**  
**DELINEATION SAMPLE PCBs ANALYTICAL RESULTS SUMMARY**  
**GM CETC BEDFORD FACILITY**  
**BEDFORD, INDIANA**

Area		P039	P039	P039	P039	P039	P039	P039
Sample Location		B-269B	B-269E	B-269E	B-269E	B-269F	B-269F	B-269F
Sample Identification		S-039-101810-JL-0742	S-039-102010-JL-1011	S-039-102010-JL-1012	S-039-102010-JL-1015	S-039-101810-JL-0726	S-039-101810-JL-0727	S-039-101810-JL-0730
Sample Date		10/18/2010	10/20/2010	10/20/2010	10/20/2010	10/18/2010	10/18/2010	10/18/2010
Sample Type								
Sample Depth		(2-2.5) ft	(5.5-6) ft	(6-6.5) ft	(7.5-8) ft	(0-0.5) ft	(0.5-1) ft	(2-2.5) ft
Liner Depths		(2-2.5) ft below liner	(0-0.5) ft below liner	(0.5-1) ft below liner	(2-2.5) ft below liner	(0-0.5) ft below liner	(0.5-1) ft below liner	(2-2.5) ft below liner
	<b>Units</b>							
<b>PCBs</b>								
Aroclor-1016 (PCB-1016)	mg/kg	0.045 U	2 U	0.04 U	0.042 U	0.04 U	0.041 U	0.045 U
Aroclor-1221 (PCB-1221)	mg/kg	0.045 U	2 U	0.04 U	0.042 U	0.04 U	0.041 U	0.045 U
Aroclor-1232 (PCB-1232)	mg/kg	0.045 U	2 U	0.04 U	0.042 U	0.04 U	0.041 U	0.045 U
Aroclor-1242 (PCB-1242)	mg/kg	0.045 U	2 U	0.04 U	0.042 U	0.04 U	0.041 U	0.045 U
Aroclor-1248 (PCB-1248)	mg/kg	0.045 U	13	0.27	0.042 U	0.053	0.041 U	0.045 U
Aroclor-1254 (PCB-1254)	mg/kg	0.045 U	2 U	0.04 U	0.042 U	0.04 U	0.041 U	0.045 U
Aroclor-1260 (PCB-1260)	mg/kg	0.045 U	1.3 J	0.054	0.042 U	0.04 U	0.041 U	0.045 U
Total PCBs	mg/kg	ND	14.3 J	0.324	ND	0.053	ND	ND
<b>General Chemistry</b>								
Total solids	%	73.6	80.7	81.9	78.8	83.0	80.7	74.1

Notes:

- U - Not present at or above the associated reporting limit.
- J - Estimated concentration.
- UJ - Estimated reporting limit.
- R - Rejected.

**TABLE 2.1**  
**DELINEATION SAMPLE PCBs ANALYTICAL RESULTS SUMMARY**  
**GM CETC BEDFORD FACILITY**  
**BEDFORD, INDIANA**

Area		P039	P039	P039	P039	P039	P039	P039
Sample Location		B-270A	B-270A	B-270A	B-270E	B-270E	B-270F	B-270F
Sample Identification		S-039-101810-JL-0718	S-039-101810-JL-0720	S-039-101810-JL-0722	S-039-102210-JL-1378	S-039-102210-JL-1380	S-039-102210-JL-1366	S-039-102210-JL-1368
Sample Date		10/18/2010	10/18/2010	10/18/2010	10/22/2010	10/22/2010	10/22/2010	10/22/2010
Sample Type								
Sample Depth		(0-0.5) ft	(1-1.5) ft	(2-2.5) ft	(0-0.5) ft	(1-1.5) ft	(0-0.5) ft	(1-1.5) ft
Liner Depths		(0-0.5) ft below liner	(1-1.5) ft below liner	(2-2.5) ft below liner	(0-0.5) ft below liner	(1-1.5) ft below liner	(0-0.5) ft below liner	(1-1.5) ft below liner
	Units							
<b>PCBs</b>								
Aroclor-1016 (PCB-1016)	mg/kg	0.21 U	0.044 U	0.044 U	0.047 U	0.046 U	0.043 U	0.044 U
Aroclor-1221 (PCB-1221)	mg/kg	0.21 U	0.044 U	0.044 U	0.047 U	0.046 U	0.043 U	0.044 U
Aroclor-1232 (PCB-1232)	mg/kg	0.21 U	0.044 U	0.044 U	0.047 U	0.046 U	0.043 U	0.044 U
Aroclor-1242 (PCB-1242)	mg/kg	0.21 U	0.044 U	0.044 U	0.047 U	0.046 U	0.043 U	0.044 U
Aroclor-1248 (PCB-1248)	mg/kg	1.3	0.023 J	0.028 J	0.047 U	0.44	0.13	0.044 U
Aroclor-1254 (PCB-1254)	mg/kg	0.21 U	0.044 U	0.044 U	0.047 U	0.046 U	0.043 U	0.044 U
Aroclor-1260 (PCB-1260)	mg/kg	0.2 J	0.044 U	0.044 U	0.047 U	0.038 J	0.043 U	0.044 U
Total PCBs	mg/kg	1.5 J	0.023 J	0.028 J	ND	0.478 J	0.13	ND
<b>General Chemistry</b>								
Total solids	%	79.6	74.2	75.2	70.7	72.3	77.0	74.9

Notes:

- U - Not present at or above the associated reporting limit.
- J - Estimated concentration.
- UJ - Estimated reporting limit.
- R - Rejected.

**TABLE 2.1**  
**DELINEATION SAMPLE PCBs ANALYTICAL RESULTS SUMMARY**  
**GM CETC BEDFORD FACILITY**  
**BEDFORD, INDIANA**

Area		P039	P039	P039	P039	P039	P039	P039
Sample Location		B-271A	B-271B	B-271B	B-271C	B-271C	B-271D	B-271D
Sample Identification		S-039-101210-JL-0367	S-039-101210-JL-0379	S-039-101210-JL-0382	S-039-102210-JL-1390	S-039-102210-JL-1392	S-039-102210-JL-1354	S-039-102210-JL-1355
Sample Date		10/12/2010	10/12/2010	10/12/2010	10/22/2010	10/22/2010	10/22/2010	10/22/2010
Sample Type								
Sample Depth		(4-4.5) ft	(4-4.5) ft	(5.5-6) ft	(0-0.5) ft	(1-1.5) ft	(0-0.5) ft	(0.5-1) ft
Liner Depths		(0-0.5) ft below liner	(0-0.5) ft below liner	(1.5-2) ft below liner	(0-0.5) ft below liner	(1-1.5) ft below liner	(0-0.5) ft below liner	(0.5-1) ft below liner
	<b>Units</b>							
<b>PCBs</b>								
Aroclor-1016 (PCB-1016)	mg/kg	0.041 U	0.042 U	0.044 U	0.045 U	0.046 U	0.043 U	0.044 U
Aroclor-1221 (PCB-1221)	mg/kg	0.041 U	0.042 U	0.044 U	0.045 U	0.046 U	0.043 U	0.044 U
Aroclor-1232 (PCB-1232)	mg/kg	0.041 U	0.042 U	0.044 U	0.045 U	0.046 U	0.043 U	0.044 U
Aroclor-1242 (PCB-1242)	mg/kg	0.041 U	0.042 U	0.044 U	0.045 U	0.046 U	0.043 U	0.044 U
Aroclor-1248 (PCB-1248)	mg/kg	0.55	0.081	0.15	0.1	0.046 U	0.23	0.044 U
Aroclor-1254 (PCB-1254)	mg/kg	0.041 U	0.042 U	0.044 U	0.045 U	0.046 U	0.043 U	0.044 U
Aroclor-1260 (PCB-1260)	mg/kg	0.082	0.042 U	0.044 U	0.045 U	0.046 U	0.043 U	0.044 U
Total PCBs	mg/kg	0.632	0.081	0.15	0.1	ND	0.23	ND
<b>General Chemistry</b>								
Total solids	%	79.8	78.3	75.1	73.4	71.2	76.9	74.3

Notes:

- U - Not present at or above the associated reporting limit.
- J - Estimated concentration.
- UJ - Estimated reporting limit.
- R - Rejected.

**TABLE 2.1**  
**DELINEATION SAMPLE PCBs ANALYTICAL RESULTS SUMMARY**  
**GM CETC BEDFORD FACILITY**  
**BEDFORD, INDIANA**

Area		P039	P039	P039	P039	P039	P039	P039
Sample Location		B-271E	B-271E	B-271E	B-271E	B-271F	B-271F	B-271F
Sample Identification		S-039-100710-JL-0034	S-039-100710-JL-0035	S-039-100710-JL-0036	S-039-100710-JL-0037	S-039-100710-JL-0005	S-039-100710-JL-0018	S-039-100710-JL-0006
Sample Date		10/7/2010	10/7/2010	10/7/2010	10/7/2010	10/7/2010	10/7/2010	10/7/2010
Sample Type							Duplicate	
Sample Depth		(3.5-4) ft	(4-4.5) ft	(4.5-5) ft	(5-5.5) ft	(2-2.5) ft	(2-2.5) ft	(2.5-3) ft
Liner Depths		(0-0.5) ft above liner	(0-0.5) ft below liner	(0.5-1) ft below liner	(1-1.5) ft below liner	(0-0.5) ft below liner	(0-0.5) ft below liner	(0.5-1) ft below liner
	Units							
<b>PCBs</b>								
Aroclor-1016 (PCB-1016)	mg/kg	0.047 U	0.04 U	0.039 U	0.04 U	0.041 U	0.043 U	0.045 U
Aroclor-1221 (PCB-1221)	mg/kg	0.047 U	0.04 U	0.039 U	0.04 U	0.041 U	0.043 U	0.045 U
Aroclor-1232 (PCB-1232)	mg/kg	0.047 U	0.04 U	0.039 U	0.04 U	0.041 U	0.043 U	0.045 U
Aroclor-1242 (PCB-1242)	mg/kg	0.21	0.04 U	0.039 U	0.04 U	0.041 U	0.043 U	0.045 U
Aroclor-1248 (PCB-1248)	mg/kg	0.047 U	0.04 U	0.44	0.04 U	0.041 U	0.043 U	0.47
Aroclor-1254 (PCB-1254)	mg/kg	0.23	0.04 U	0.039 U	0.04 U	0.041 U	0.043 U	0.045 U
Aroclor-1260 (PCB-1260)	mg/kg	0.047 U	0.04 U	0.073	0.04 U	0.041 U	0.043 U	0.098
Total PCBs	mg/kg	0.44	ND	0.513	ND	ND	ND	0.568
<b>General Chemistry</b>								
Total solids	%	70.6	83.3	84.2	83.1	80.7	76.7	73.2

## Notes:

U - Not present at or above the associated

J - Estimated concentration.

UJ - Estimated reporting limit.

R - Rejected.

**TABLE 2.1**  
**DELINEATION SAMPLE PCBs ANALYTICAL RESULTS SUMMARY**  
**GM CETC BEDFORD FACILITY**  
**BEDFORD, INDIANA**

Area		P039	P039	P039	P039	P039	P039	P039
Sample Location		B-271F	B-271F	B-271F	B-271G	B-271Ga	B-271Ga	B-271H
Sample Identification		S-039-100710-JL-0019	S-039-100710-JL-0008	S-039-100710-JL-0021	S-039-101910-JL-0866	S-039-110910-JL-1714	S-039-110910-JL-1715	S-039-101910-JL-0854
Sample Date		10/7/2010	10/7/2010	10/7/2010	10/19/2010	11/9/2010	11/9/2010	10/19/2010
Sample Type		Duplicate		Duplicate				
Sample Depth		(2.5-3) ft	(3.5-4) ft	(3.5-4) ft	(0-0.5) ft	(0-0.5) ft	(0.5-1) ft	(0-0.5) ft
Liner Depths		(0.5-1) ft below liner	(1.5-2) ft below liner	(1.5-2) ft below liner	(0-0.5) ft below liner	(0-0.5) ft below liner	(0.5-1) ft below liner	(0-0.5) ft below liner
	<b>Units</b>							
<b>PCBs</b>								
Aroclor-1016 (PCB-1016)	mg/kg	0.46 U	0.041 U	0.041 U	0.041 U	0.038 U	0.19 U	0.04 U
Aroclor-1221 (PCB-1221)	mg/kg	0.46 U	0.041 U	0.041 U	0.041 U	0.038 U	0.19 U	0.04 U
Aroclor-1232 (PCB-1232)	mg/kg	0.46 U	0.041 U	0.041 U	0.041 U	0.038 U	0.19 U	0.04 U
Aroclor-1242 (PCB-1242)	mg/kg	0.46 U	0.041 U	0.041 U	0.041 U	0.038 U	0.19 U	0.04 U
Aroclor-1248 (PCB-1248)	mg/kg	3.3	0.34	0.41	0.57	0.3	1.3	0.58
Aroclor-1254 (PCB-1254)	mg/kg	0.46 U	0.041 U	0.041 U	0.041 U	0.038 U	0.19 U	0.04 U
Aroclor-1260 (PCB-1260)	mg/kg	0.34 J	0.05	0.04 J	0.064	0.06	0.21	0.04 U
Total PCBs	mg/kg	3.64 J	0.39	0.45 J	0.634	0.36	1.51	0.58
<b>General Chemistry</b>								
Total solids	%	71.7	81.2	79.8	79.7	87.7	87.2	82.8

## Notes:

U - Not present at or above the associated

J - Estimated concentration.

UJ - Estimated reporting limit.

R - Rejected.

**TABLE 2.1**  
**DELINEATION SAMPLE PCBs ANALYTICAL RESULTS SUMMARY**  
**GM CETC BEDFORD FACILITY**  
**BEDFORD, INDIANA**

Area		P039	P039	P039	P039	P039	P039	P039
Sample Location		B-271H	B-272A	B-272A	B-272A	B-272E	B-272J	B-272J
Sample Identification		S-039-101910-JL-0856	S-039-101910-JL-0878	S-039-101910-JL-0879	S-039-101910-JL-0880	S-039-101910-JL-0930	S-039-101910-JL-0907	S-039-101910-JL-0923
Sample Date		10/19/2010	10/19/2010	10/19/2010	10/19/2010	10/19/2010	10/19/2010	10/19/2010
Sample Type								Duplicate
Sample Depth		(1-1.5) ft	(0-0.5) ft	(0.5-1) ft	(1-1.5) ft	(0-0.5) ft	(4.5-5) ft	(4.5-5) ft
Liner Depths		(1-1.5) ft below liner	(0-0.5) ft below liner	(0.5-1) ft below liner	(1-1.5) ft below liner	(0-0.5) ft below liner	(0-0.5) ft below liner	(0-0.5) ft below liner
	Units							
<b>PCBs</b>								
Aroclor-1016 (PCB-1016)	mg/kg	0.04 U	0.039 U	0.041 U	0.043 U	0.039 U	0.041 U	0.042 U
Aroclor-1221 (PCB-1221)	mg/kg	0.04 U	0.039 U	0.041 U	0.043 U	0.039 U	0.041 U	0.042 U
Aroclor-1232 (PCB-1232)	mg/kg	0.04 U	0.039 U	0.041 U	0.043 U	0.039 U	0.041 U	0.042 U
Aroclor-1242 (PCB-1242)	mg/kg	0.04 U	0.039 U	0.041 U	0.043 U	0.039 U	0.041 U	0.042 U
Aroclor-1248 (PCB-1248)	mg/kg	0.04 U	0.039 U	0.041 U	0.043 U	0.54	0.59	0.53
Aroclor-1254 (PCB-1254)	mg/kg	0.04 U	0.025 J	0.041 U	0.043 U	0.039 U	0.041 U	0.042 U
Aroclor-1260 (PCB-1260)	mg/kg	0.04 U	0.039 U	0.041 U	0.043 U	0.088	0.17	0.17
Total PCBs	mg/kg	ND	0.025 J	ND	ND	0.628	0.76	0.7
<b>General Chemistry</b>								
Total solids	%	82.1	84.3	79.9	77.5	84.8	79.5	78.2

## Notes:

U - Not present at or above the associated

J - Estimated concentration.

UJ - Estimated reporting limit.

R - Rejected.